

The Flat Gold Project, Alaska

A Tier-One Heap Leach Mining Opportunity



Forward Looking Statements and Compliance With National Instrument 43-101

All statements in this presentation, other than statements of historical fact, are "forward-looking statements" or "forward looking information" with respect to Tectonic Metals Inc. (the "Company") within the meaning of applicable securities laws, including statements that address pro forma capitalization tables, the size and use of proceeds of any proposed financings, the discovery and development of gold deposits, potential size of a mineralized zone, potential expansion of mineralization and timing of exploration and development plans. Forward-looking information is often, but not always, identified by the use of words such as "seek", "anticipate", "plan", "continue", "planned", "expect", "project", "predict", "potential", "targeting", "intends", "believe", and similar expressions, or describes a "goal", or variation of such words and phrases or state that certain actions, events or results "may", "should", "could", "would", "might" or "will" be taken, occur or be achieved. Forward-looking information is not a guarantee of future performance and is based upon a number of estimates and assumptions of management at the date the statements are made including, among others, assumptions regarding timing of exploration and development plans at the Company's mineral projects; timing and completion of proposed financings; timing and likelihood of deployment of additional drill rigs; successful delivery of results of metallurgical testing; the release of an initial resource report on any of our properties; assumptions about future prices of gold, copper, silver, and other metal prices; currency exchange rates and interest rates; metallurgical recoveries; favourable operating conditions; political stability; obtaining governmental approvals and financing on time; obtaining renewals for existing licences and permits and obtaining required licences and permits; labour stability; stability in market conditions; availability of equipment; accuracy of historical information; successful resolution of disputes and anticipated costs and expenditures. Many assumptions are based on factors and events that are not within the control of the Company and there is no assurance they will prove to be correct.

Such forward-looking information involves known and unknown risks, which may cause the actual results to be materially different from any future results expressed or implied by such forward-looking information, including, but not limited to, the cost, timing and success of exploration activities generally, including the development of new deposits; possible variations in grade or recovery rates; failure of equipment or processes to operate as anticipated; the failure of contracted parties to perform; uses of funds in general including future capital expenditures, exploration expenditures and other expenses for specific operations; the timing, timeline and possible outcome of permitting or license renewal applications; government regulation of exploration and mining operations; environmental risks; the uncertainty of negotiating with foreign governments; expropriation or nationalization of property without fair compensation; adverse determination or rulings by governmental authorities; delays in obtaining governmental approvals; possible claims against the Company; the impact of archaeological, cultural or environmental studies within property areas; title disputes or claims; limitations on insurance coverage; the interpretation and actual results of historical operators at certain of our exploration properties; changes in project parameters as plans continue to be refined; current economic conditions; future prices of commodities; and delays in obtaining financing. The Company's forward-looking information reflect the beliefs, opinions, and projections on the date the statements are made. The Company assumes no obligation to update forward-looking information or beliefs, opinions, projections, or other factors, should they change, except as required by law.

In addition, this presentation contains core photographs, detailed geological notes, and descriptive observations such as alteration styles, mineralogy and visible gold. These observations are preliminary in nature, may not be representative of the entire interval or system, and should not be relied upon as a guarantee of mineralized assay results or as the basis for any investment decision. Investors and readers are cautioned that visual estimates, core photographs, and geological descriptions are not substitutes for accredited laboratory assay results and do not demonstrate the economic viability of any mineral deposit.

The Company makes no representation or warranty regarding the accuracy or completeness of any historical data from prior exploration undertaken by others other than the company and has not taken any steps to verify, the adequacy, accuracy or completeness of the information provided herein and, under no circumstances, will be liable for any inaccuracies or omissions in any such information or data, any delays or errors in the transmission thereof, or any loss or direct, indirect, incidental, special or consequential damages caused by reliance on this information or the risks arising from the stock market.

Prospective investors should not construe the contents of this presentation as legal, tax, investment, accounting or other advice. Prospective investors are urged to consult with their own advisors with respect to legal, tax, regulatory, financial, accounting and other such matters relating to their investment in the Company.

The Company securities have not been approved or disapproved by the U.S. Securities and Exchange Commission or by any state, provincial or other securities regulatory authority, nor has the U.S. Securities and Exchange Commission or any state, provincial or other securities regulatory authority passed on the accuracy or adequacy of this presentation. Any representation to the contrary is a criminal offense.

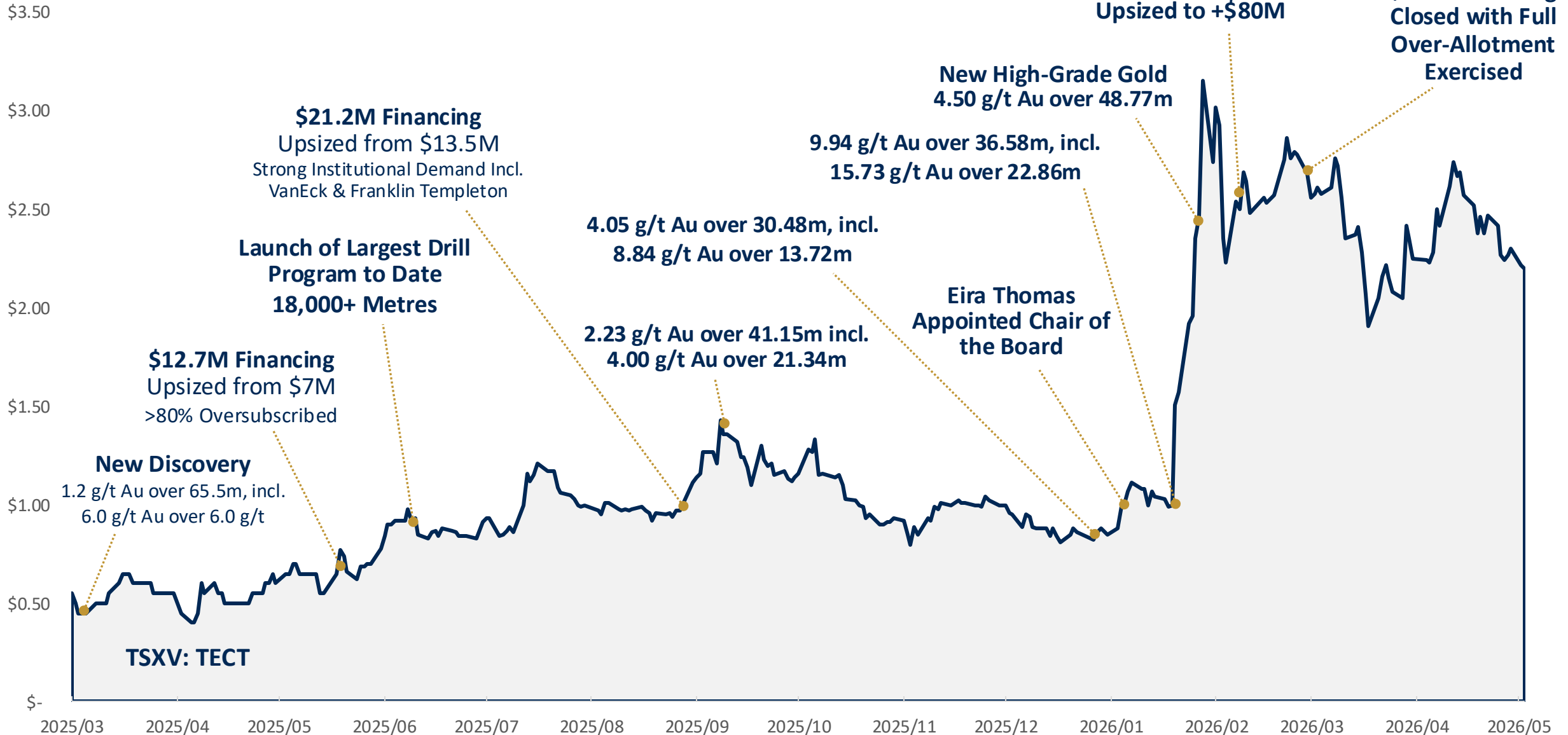
The Company is incorporated under the laws of British Columbia, Canada. Many of the Company's assets are located outside the United States and most or all of its directors and officers are residents of countries other than the United States. As a result, it may be difficult for investors in the United States to effect service of process within the United States upon the Company or such directors and officers, or to realize in the United States upon judgments of courts of the United States predicated upon civil liability of the Company and its directors and officers under the United States federal securities laws.

COMPLIANCE WITH NATIONAL INSTRUMENT 43-101

Peter Kleespies, M.Sc., P. Geo, Vice President for Tectonic Metals Inc, is the Qualified Person for the Company as defined by National Instrument 43-101 and is responsible for reviewing and approving the scientific and technical content of all materials publicly disclosed by Tectonic, including the contents of this presentation.

A TRANSFORMATIONAL YEAR FOR TECTONIC METALS

2025-2026: Over \$100M Raised + High Grade Gold Drilled



40,000 Metre, Five-Rig Drill Program Underway at Flat Project

Backed by a **~C\$100M treasury**, Tectonic's 2026 drilling season is underway, executing on four pillars of value creation:

- 1 Expansion and growth drilling
- 2 Maiden resource definition
- 3 District-scale regional discovery drilling
- 4 Project de-risking and infrastructure expansion

“Our objectives for 2026 are clear: expand high-grade mineralization, make new discoveries across the property, deliver a maiden mineral resource at Chicken Mountain in Q1 2027, and begin advancing the project toward development.”

Tony Reda, Co-Founder, President & CEO



[Click Here](#) to Watch the Field Operations Video



Alaska's Tier-1 Advantage

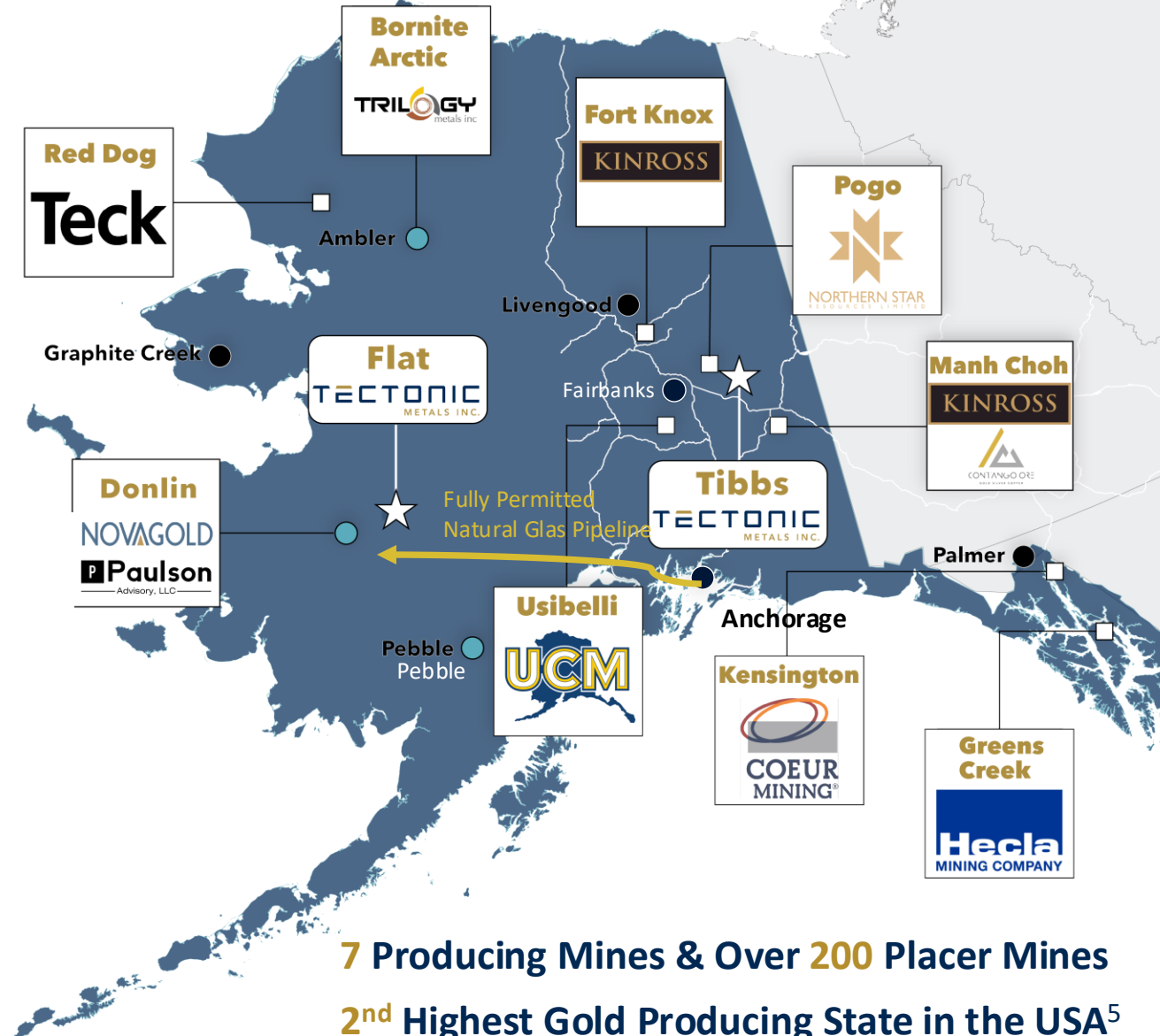
US Government Support for Domestic Mineral Independence

FAST-41 Status¹	Donlin Gold	Federal initiative that enhances transparency, accountability, and predictability in the federal permitting process. Direct proximity benefit: Donlin is 40km from Tectonic's Flat Project.
\$35.6M Federal Equity Stake²	Trilogy Metals	Sets precedent for US Government backing junior miners.
\$43.4M Grant³	Nova Minerals	Defense Production Act funds regional development in the Tintina Belt.

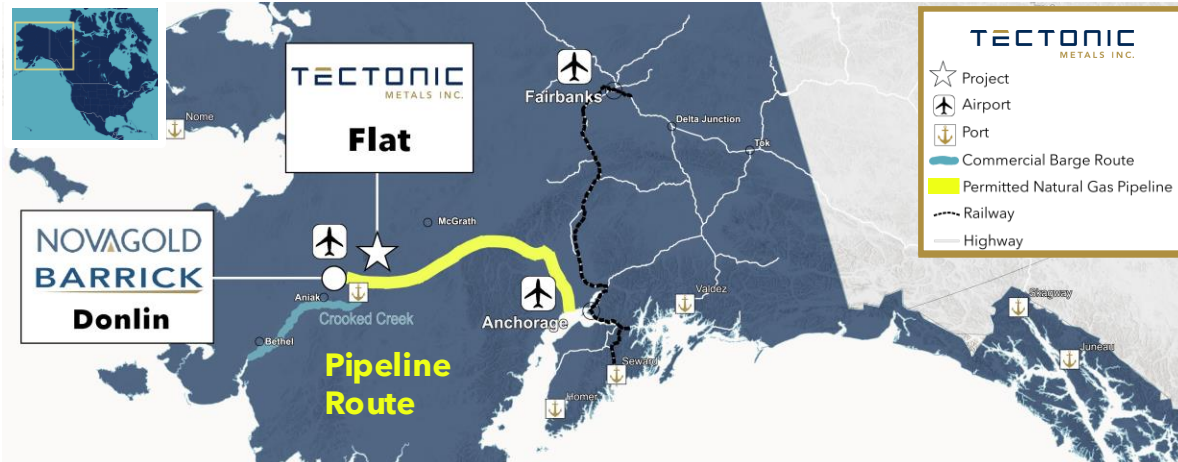
Natural Gas Pipeline – Anchorage to Donlin

Strategic Infrastructure Alignment	Donlin Gold & Glenfarne Alaska LNG, LLC	Signed LOI to bring natural gas to the region ⁴ .
---	---	--

ALASKA



Roads to Mineralized Zones, Onsite Hercules Airstrip, Commercial Barge River Access

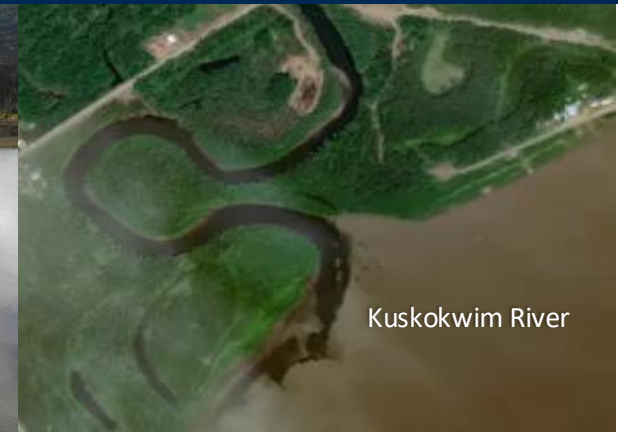


Donlin Permitted Natural Gas Pipeline

Chicken Mountain Road Access



4100 Ft Hercules Cargo Plane Airstrip



Crooked Creek Barge River Access

Alaska's Largest Private Landowner – a Committed Tectonic Shareholder



- Doyon, Alaska Native Regional Corp., invests **>\$5 Million** into Tectonic
- Tectonic's **2nd largest shareholder**
- Largest private landholder in Alaska **with 12.5M acres of land**, including Flat
- Discovery-to-Production, ESG/IBA Lease Agreements are **already in place**
- A **20-year history** of mineral, oil and gas exploration agreements

Tectonic's alliance
with Doyon creates a
true **fully-aligned**
partnership.



TAKE A TOUR OF THE FLAT GOLD PROJECT

Guided by the CEO of Doyon Ltd. & the CEO of Tectonic Metals Ltd.



Watch Video



A LEGACY OF VALUE CREATION

Proven Track Record of Success in all Aspects of the Exploration and Mining Business

- **Discovery** = +30 million oz Au
- **Development** = 18 Feasibility Studies
- **Permitting** = 20 projects
- **Production** = 16 mines
- **M&A** = \$3.7 billion in transactions
- **Capital Raising** = +\$2 billion



Eira Thomas *Founder & Chair*



Tony Reda *Founder, CEO & President*



Maggie Layman *VP Exploration*
P. Geo.



Peter Kleespies *Chief Geological Officer*
M.Sc., P. Geo.



Oliver Foeste *CFO*
CPA, CA



Dr. John P. Armstrong *Director*
Ph.D., P. Geo.



Joseph J. Perkins Jr. *Director*
B.S.E. (Geo. Eng.), J.D.



Allison Rippon Armstrong *Director*








Michael W. (Mick) Roper *Director*
M.Sc., P. Geo.

A Committed, Proven and Successful Team

Team Member	Role	ESG	Mine Finder	Mining	M&A	Capital Markets	Experience
 Eira Thomas	<i>Founder & Chair</i>	●	●	●	●	●	Discovery of Diavik diamond mine, CEO of Kaminak Gold, Formerly longest serving director of Suncor Energy & CEO of Lucara Diamond
 Tony Reda	<i>Founder, CEO & President</i>	●	●		●	●	Raised >\$200 million, \$520 million sale of Kaminak's Coffee Gold Project.
 Maggie Layman P.Geo.	<i>VP Exploration</i>	●	●	●	●		Registered Professional Geoscientist with over 20 years of experience in mineral exploration and advanced-stage project development across North America.
 Peter Kleespies M.Sc., P.Geo.	<i>Chief Geological Officer</i>	●	●		●		30+ years of geological and management experience in mineral exploration globally; Hope Bay Gold discovery sold for \$1.5 billion.
 Oliver Foeste CPA, CA	<i>CFO</i>			●	●	●	Founder & Managing Partner of Invictus Accounting; 20+ years of executive finance and compliance leadership for TSX, TSXV, and NYSE companies.
 Dr. John P. Armstrong Ph.D., P. Geo.	<i>Director</i>	●	●	●	●		30+ years of mining, mineral exploration, and government experience including gold projects in Yellowknife, Red Lake, and the Hope Bay Greenstone Belt
 Joseph J. Perkins Jr. B.S.E. (Geo. Eng.), J.D.	<i>Director</i>	●		●	●	●	40+ year legal career, involved with every major resource project in Alaska including Greens Creek, Fort Knox, and Pogo mines
 Allison Rippon Armstrong	<i>Director</i>	●	●	●	●		Environmental Biologist, UN consultant, 25 years experience in ESG and mine permitting.
 Michael W. (Mick) Roper M.Sc., P.Geo.	<i>Director</i>		●	●	●		40+ years' international geological experience spanning the mineral resource development cycle. Past 16 years exploration and M&A for Agnico Eagle.

TECHNICAL ADVISORY COMMITTEE
Industry-Leading Exploration Geologists and Mining Engineers

Name	Designations	Economic & Structural Geology	Heap Leach Mining			Experience
			Design	Construct	Operate	
 Mark Smith	P.E., G.E., D.GE, S.E.		●	●	●	Involved in the design, construction, operations and closure of heap leach mine and tailings management facilities for 35 years.
 Dr. Corné Koegelenberg	Pr. Sci. Nat., MGSSA, MSEG	●				Responsible for over 44 projects and specializes in license- to deposit-scale exploration targeting and 3D Geomodelling.
 Dr. Ian Basson	Pr. Sci. Nat., FGSSA, MSEG, AMSAIEG	●				Ph.D. in Structural-Economic Geology and an industry expert in structural interpretation of geophysical data, forward structural modelling, and targeting for exploration.
 Michael McCall	Pr. Sci. Nat., FGSSA, MSEG	●				Principal Structural-Economic Geologist that has spent the last decade consulting for a broad range of exploration, mining and investment clients (30+ projects).
 Dr. Richard Goldfarb	Ph.D.	●				World-leading expert on Alaskan geology and orogenic gold systems, with 40+ years of academic and industry experience, has authored 250+ publications, the 2023 SEG Penrose Medal recipient, and helped shape modern gold exploration across Alaska and beyond.

WHY TECTONIC?

A Tier-1 Gold Mining Opportunity



The Flat Gold System: Potential for Six Kilometer-Scale Deposits

Caribou
1.7 km x 2.1 km

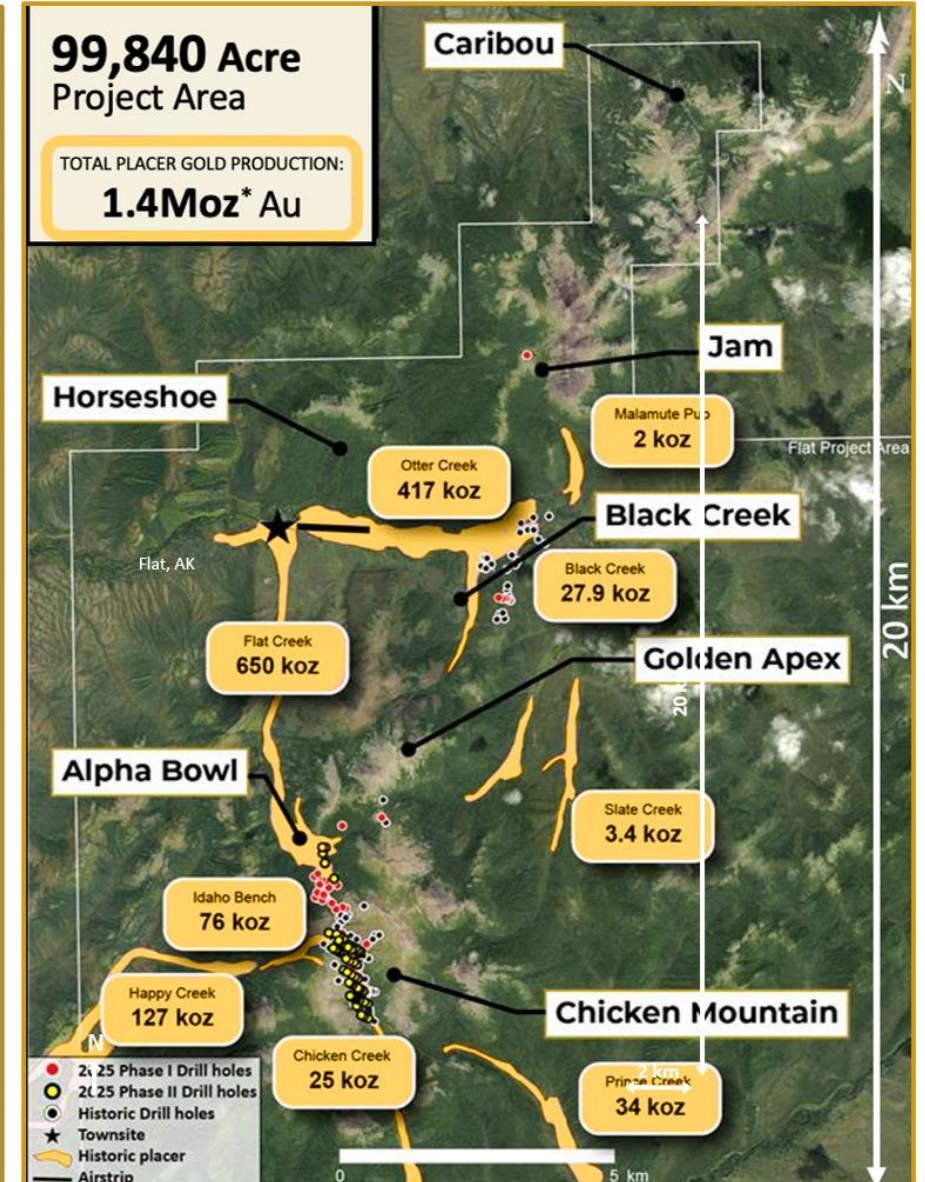
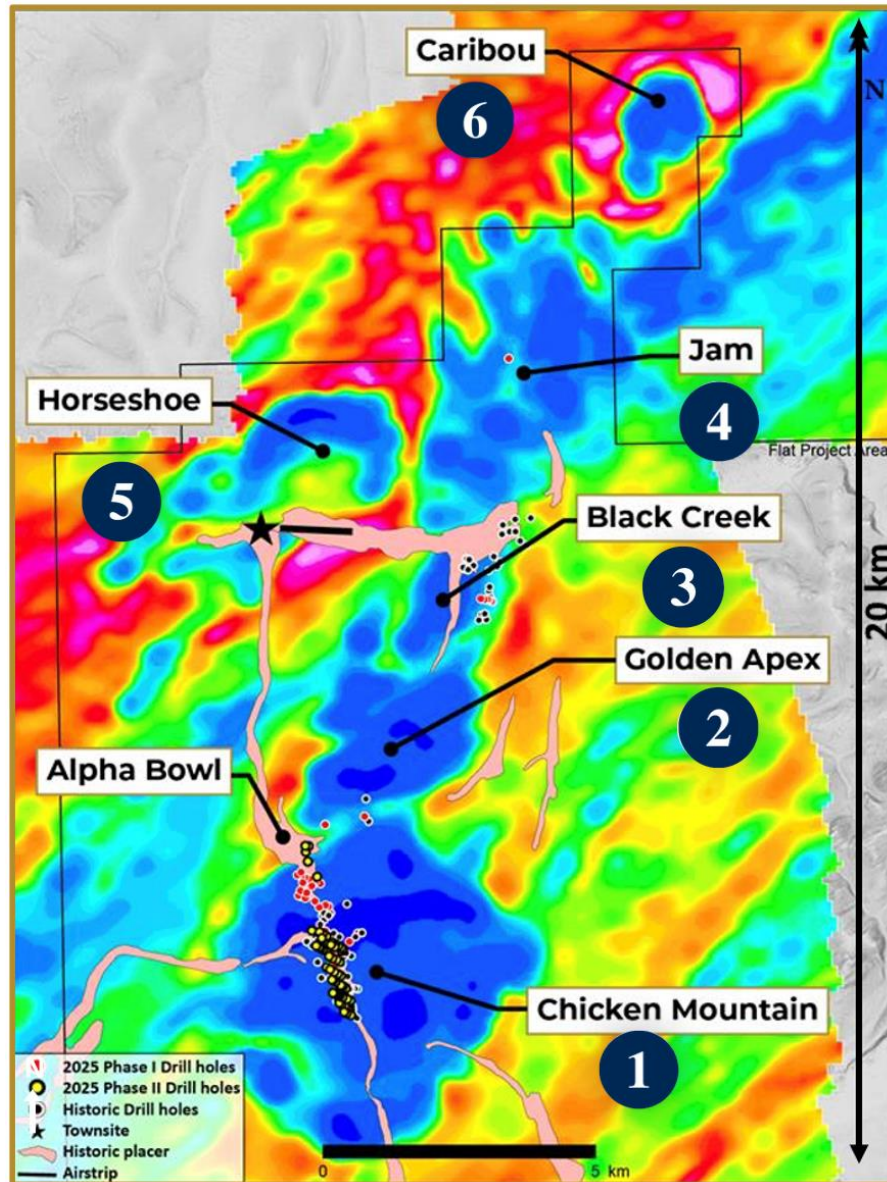
Horseshoe
3.0 km x 2.0 km

Jam
3.4 km x 5.5 km

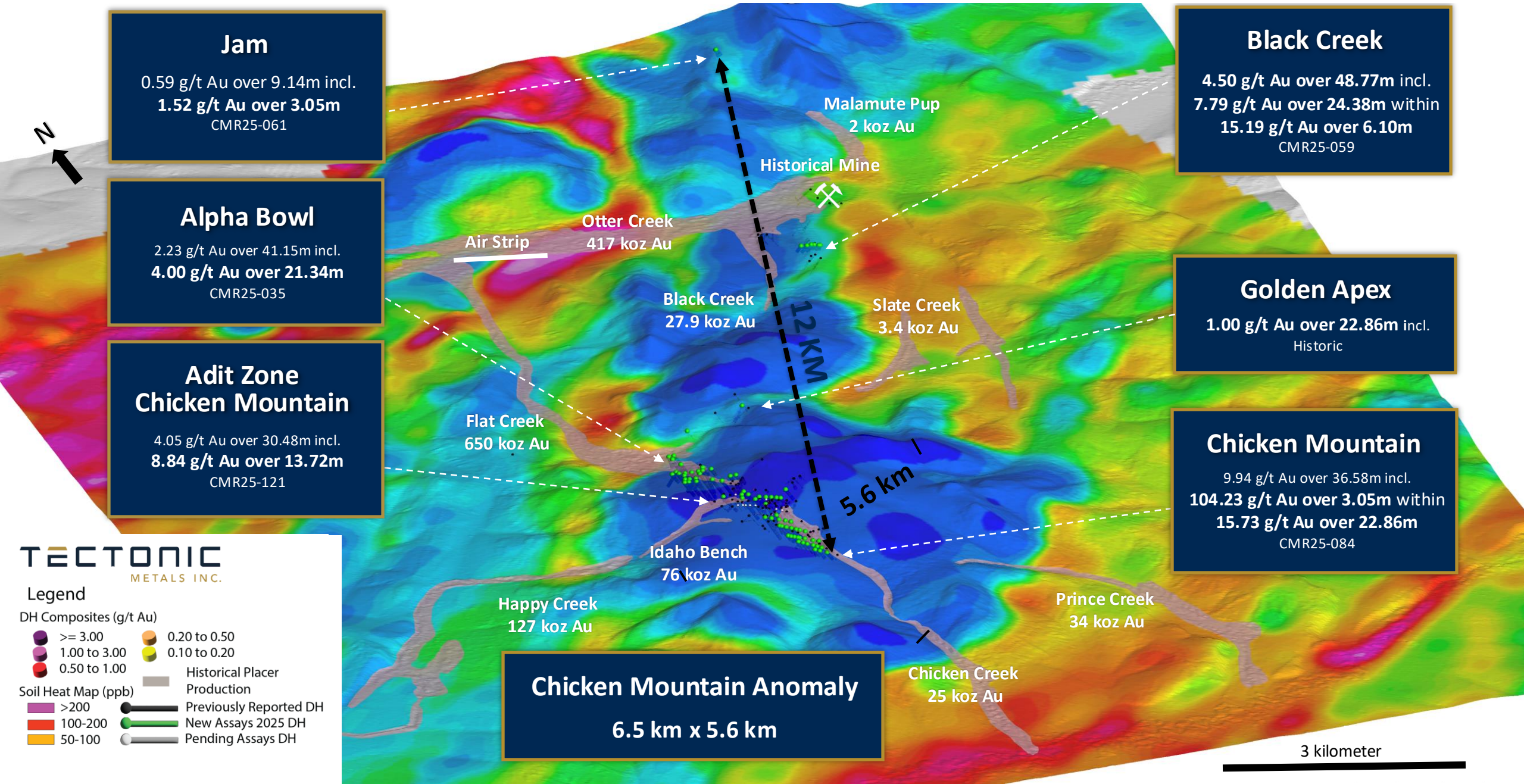
Black Creek
1.5 km x 1.5 km

Golden Apex
2.5 km x 2.5 km

Chicken Mountain
6.5 km x 5.6 km



Oblique View of Flat Project Area, Geophysics 7200 HZ EM



Jam
0.59 g/t Au over 9.14m incl.
1.52 g/t Au over 3.05m
CMR25-061

Alpha Bowl
2.23 g/t Au over 41.15m incl.
4.00 g/t Au over 21.34m
CMR25-035

**Adit Zone
Chicken Mountain**
4.05 g/t Au over 30.48m incl.
8.84 g/t Au over 13.72m
CMR25-121

Black Creek
4.50 g/t Au over 48.77m incl.
7.79 g/t Au over 24.38m within
15.19 g/t Au over 6.10m
CMR25-059

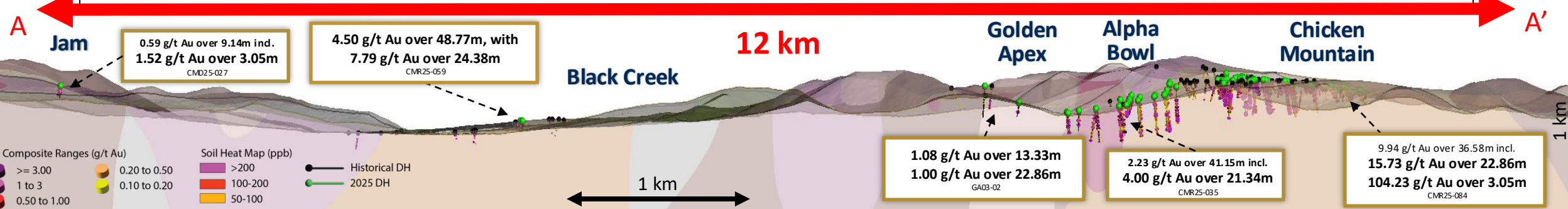
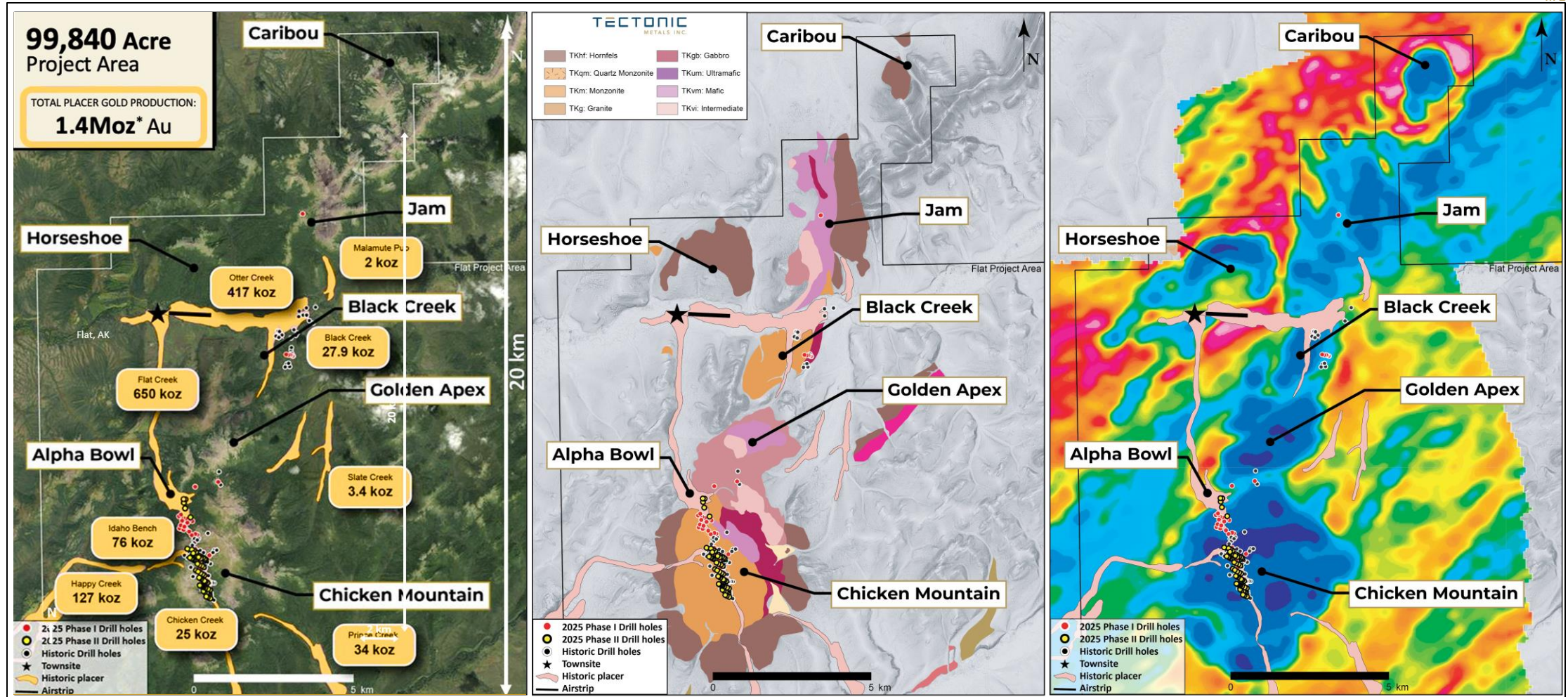
Golden Apex
1.00 g/t Au over 22.86m incl.
Historic

Chicken Mountain
9.94 g/t Au over 36.58m incl.
104.23 g/t Au over 3.05m within
15.73 g/t Au over 22.86m
CMR25-084

Chicken Mountain Anomaly
6.5 km x 5.6 km

- Legend**
- DH Composites (g/t Au)
- >= 3.00
 - 1.00 to 3.00
 - 0.50 to 1.00
 - 0.20 to 0.50
 - 0.10 to 0.20
- Soil Heat Map (ppb)
- >200
 - 100-200
 - 50-100
 - Historical Placer Production
 - Previously Reported DH
 - New Assays 2025 DH
 - Pending Assays DH

FLAT PROJECT AREA OVERVIEW



WHY TECTONIC?

Chicken Mountain Intrusion: Multi-Million Ounce Open-Pit Potential

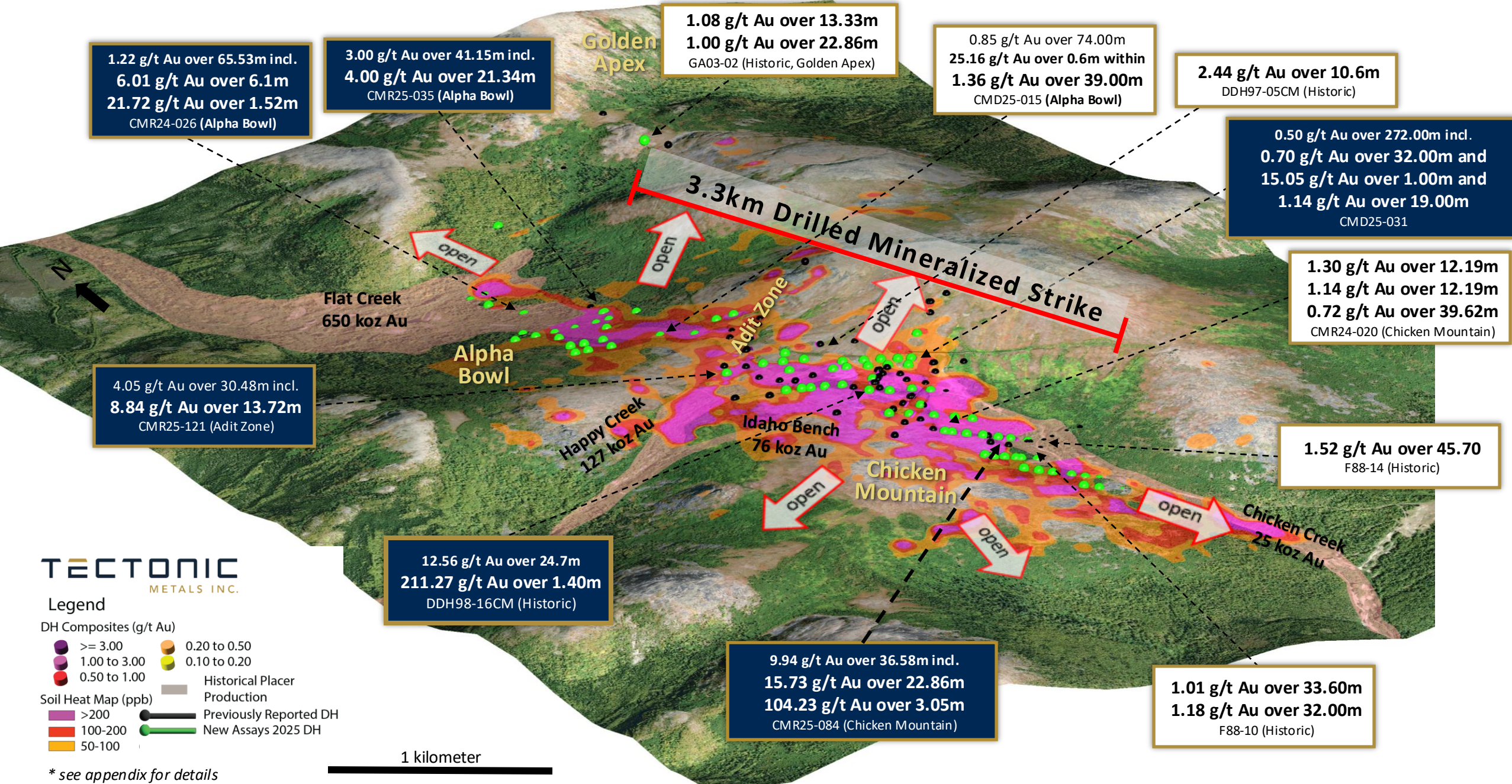


Chicken Mountain is Not a Mountain

- A plateau for kilometres with little to no overburden
- Gold mineralization starts at surface
- Favourable topography aligned with gold zones



3.3 KM Drilled Mineralized Strike, 325 Metre Vertical Depth, Open in All Directions



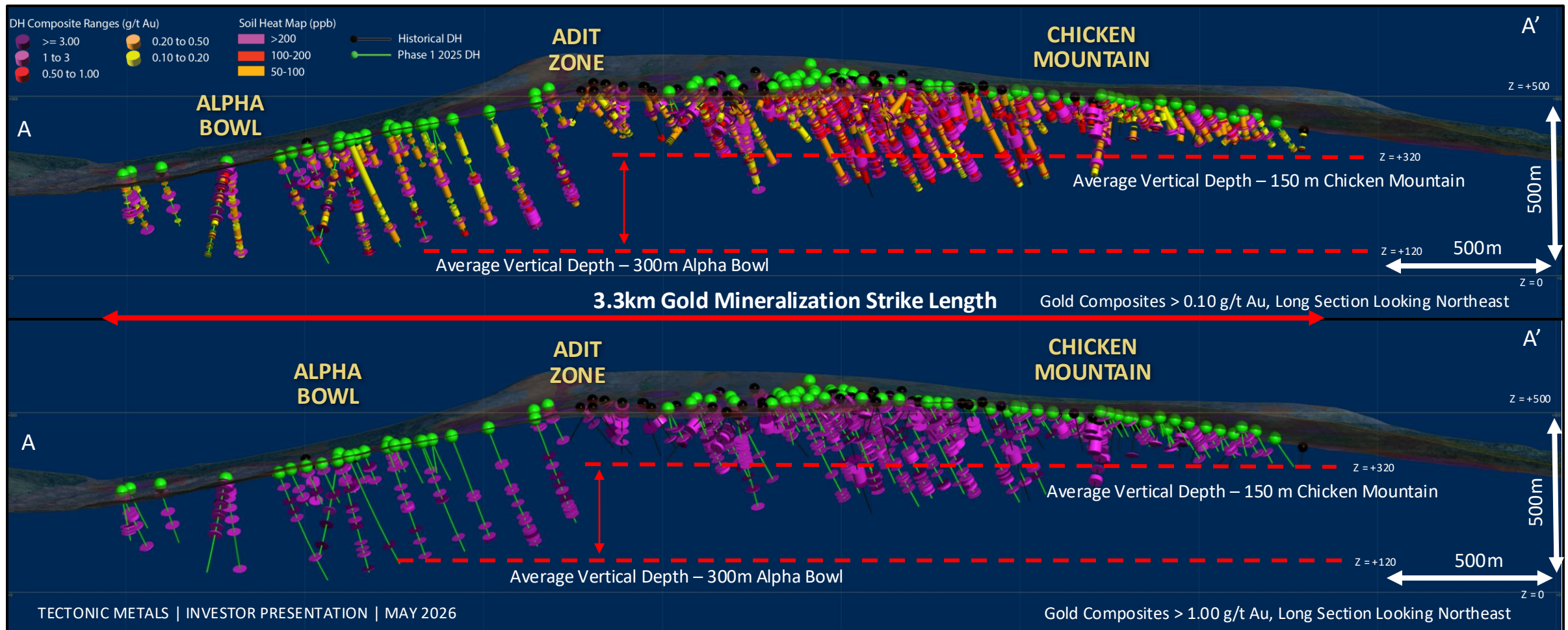
Significant Depth Expansion Potential & Starter Pit Opportunities

100% Drill Success Rate: 191 of 191 holes intersected gold mineralization

61% of all drill holes (117 of 191 holes) ended in mineralization

Multiple higher-grade corridors identified within this large mineralized envelope that could represent potential starter-pit opportunities

Alpha Bowl drilled mineralization confirmed to 300m; highlights a substantial untested high-priority exploration target from 150m–300m at Chicken Mountain



40,000 Metre, Five-Rig Drill Program Underway at Flat Project

Drilling is officially underway and will continue through late fall, planning for approximately 30,000m diamond core; 10,000m RC, with four key objectives:

1 Chicken Mountain Expansion & Growth Drilling

Aggressive step-outs along strike, width and depth, alongside targeted expansion drilling of the higher-grade corridors and potential mining starter-pits.

2 Delivering the Maiden Resource at Chicken Mountain

The Chicken Mountain intrusive complex (including the Adit and Alpha Bowl Zones) is the most advanced target and primary focus of the 2026 program.

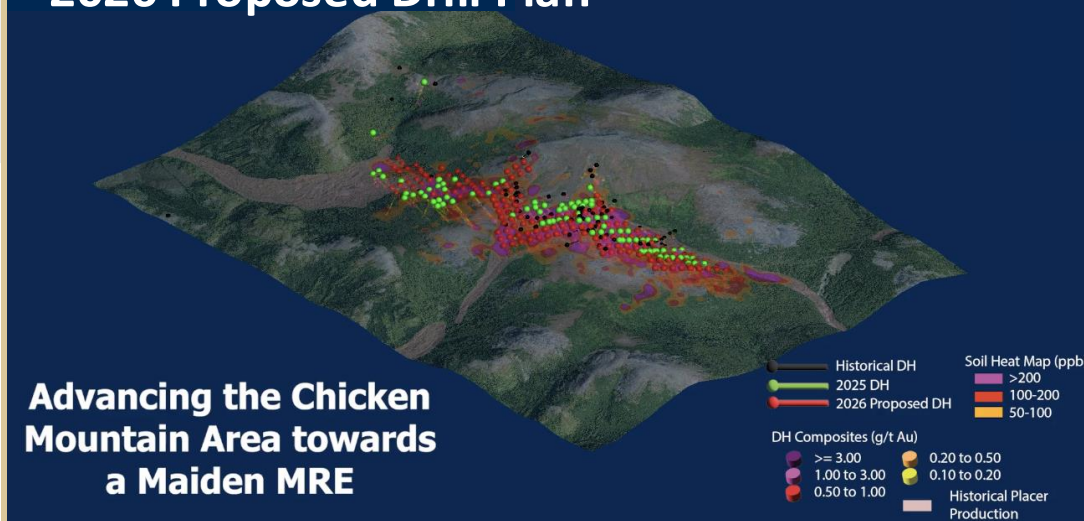
3 Discovery Drilling at District-Scale Targets & Regional Target Pipeline Growth

A minimum of 5,000 metres is dedicated to testing district-scale, intrusion-related targets across the 99,800-acre property. This extensive regional campaign is supported by foundational geology work designed to unlock the broader potential of the Flat Gold Project.

4 Advanced Project De-Risking & Engineering Studies

Tectonic is operating with a mine-builder's mindset. To support a five-rig fleet and transition Chicken Mountain toward development, the Company is running critical engineering studies in parallel with strategic infrastructure investments.

2026 Proposed Drill Plan



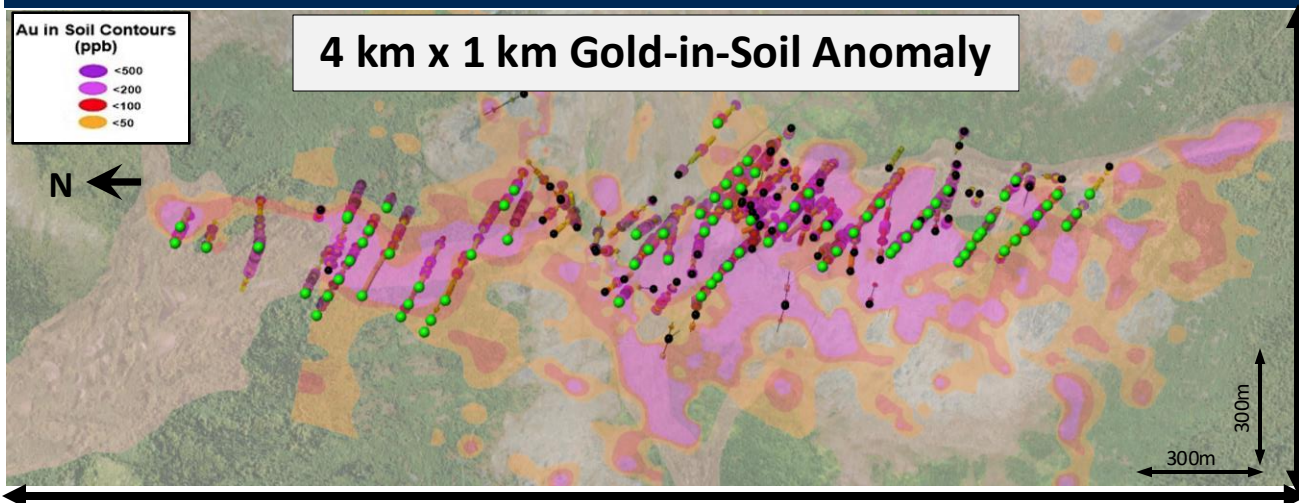
[Click Here](#) to Watch the Proposed Drill Plan Video



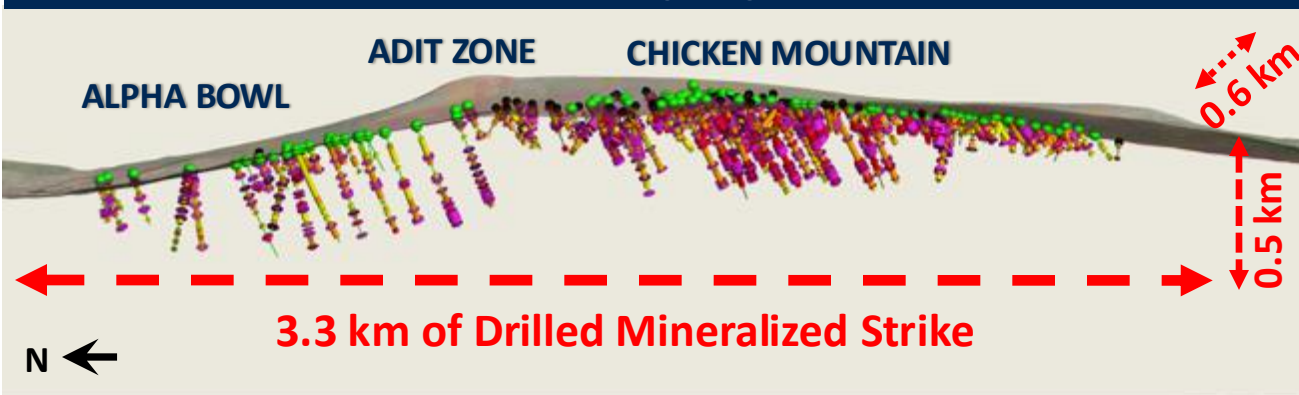
< 50% OF GOLD-IN-SOIL ANOMALIES DRILL TESTED TO DATE

With a 100% Drill Success Rate, Gold-in-Soil Anomalies Indicate Potential Deposit Size

Chicken Mountain Mineralization Footprint Plan view



Chicken Mountain Drilling Longitudinal Section



*See appendix for references

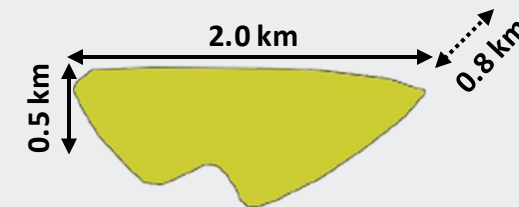
Mineralization Footprints of Other Tintina Projects

KINROSS

FORT KNOX MINE

Past production:
9.0 Moz Au¹

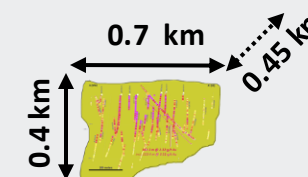
Mineral Resource (M&I):
3.0 Moz @ 0.83 g/t Au¹



SNOWLINE GOLD CORP.

ROGUE PROJECT

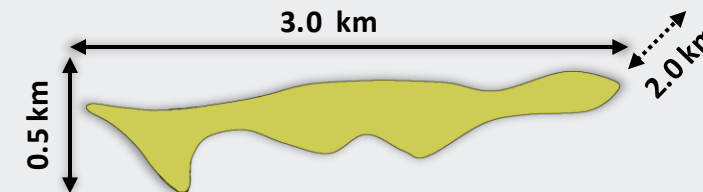
Mineral Resource (M&I):
7.94 Moz @ 1.21 g/t Au²



NOVAGOLD

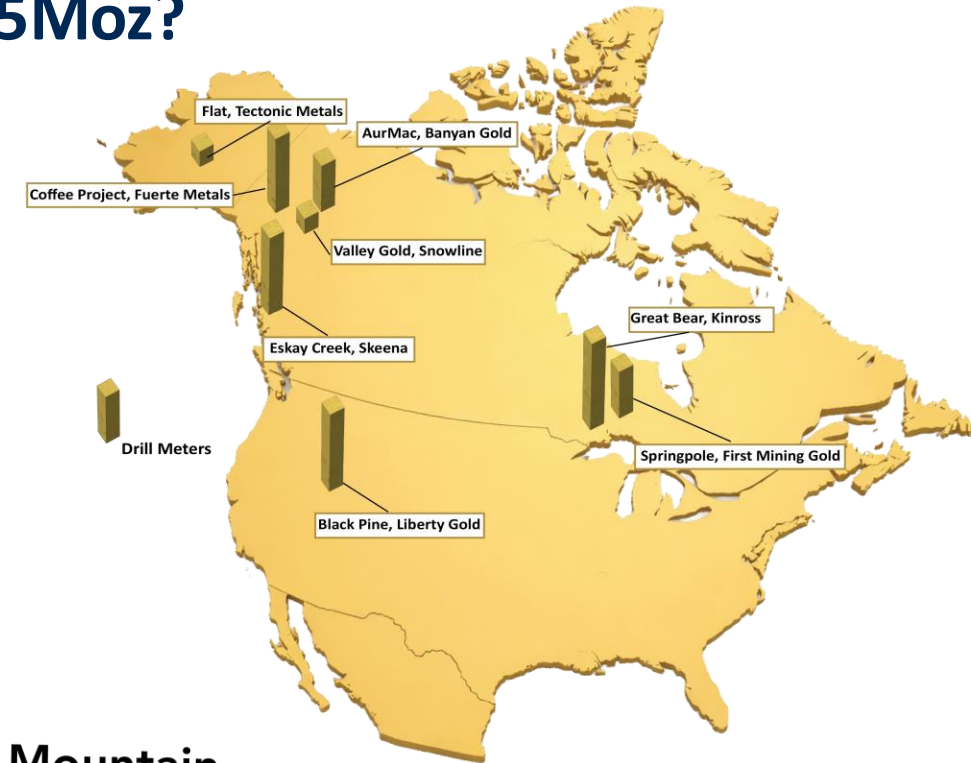
DONLIN GOLD PROJECT

Mineral Resource (M&I):
39 Moz @ 2.24 g/t Au³



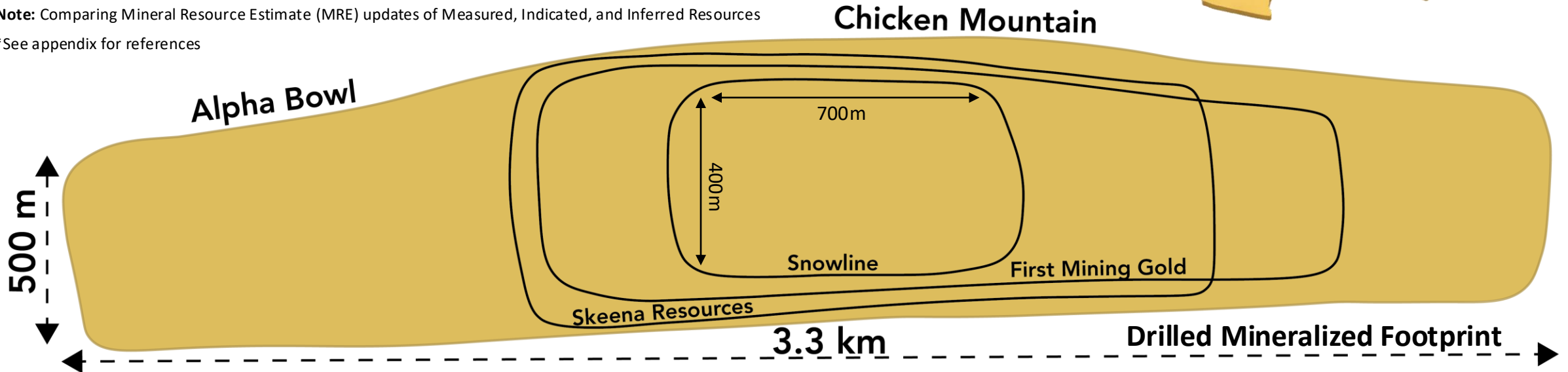
The Million-Ounce Question: How Many Metres to 5Moz?

Project	Drill Metres (Approx)	M&I	Inferred	Market Cap
Great Bear Project – Kinross ¹	850,000	2.7MOZ	3.9MOZ	\$46.7B CAD
Coffee Project – Fuerte Metals ²	280,000	3.0MOZ	0.8MOZ	\$1.4B CAD
Black Pine – Liberty Gold ³	240,000	4.1MOZ	0.7MOZ	\$739.8M CAD
Eskay Creek – Skeena Resources ⁴	220,000	5.4MOZ AuEq	0.2MOZ AuEq	\$5.18B CAD
Springpole – First Mining Gold ⁵	207,000	4.8MOZ	0.8MOZ	\$691.8M CAD
AurMac – Banyan Gold ⁶	160,000	2.3MOZ	5.5MOZ	\$583.2M CAD
Rouge – Snowline ⁷	53,000	7.9MOZ	0.9MOZ	\$3.03B CAD
Flat Project Chicken Mountain, Alpha Bowl – Tectonic Metals	17,000 to date	TBD	TBD	\$236.3M CAD

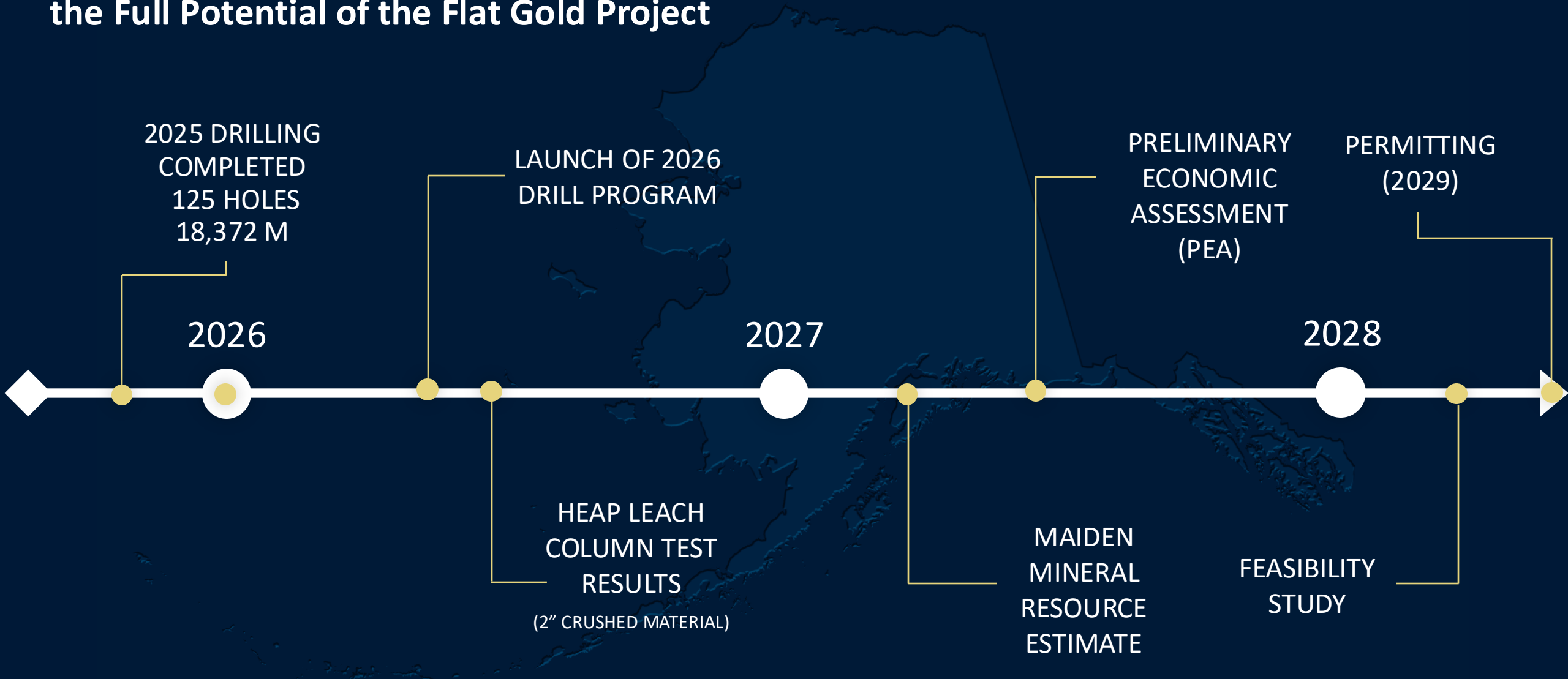


Note: Comparing Mineral Resource Estimate (MRE) updates of Measured, Indicated, and Inferred Resources

*See appendix for references



Catalyst-Driven Development Plan Toward Unlocking the Full Potential of the Flat Gold Project



Strong, Committed, Indigenous and Institutional Shareholders

CAPITAL STRUCTURE

INSTITUTIONAL OWNERSHIP

CAPITAL STRUCTURE (Current as of May 2026)	
Shares Outstanding	133,963,906
Fully Diluted	171,360,636
Estimated Cash	~\$100 million
Institutional Shareholders	~45%
Debt	None
Recent Financings	<p>2026 : \$92,033,975 @ \$2.15/share (no warrants)</p> <p>2025: \$21,207,639 @ \$0.95/share (no warrants)</p> <p>2025: \$12,736,300 @ \$0.50/unit (1 warrant at \$0.75 expiring May 2027)</p>



ANALYST COVERAGE



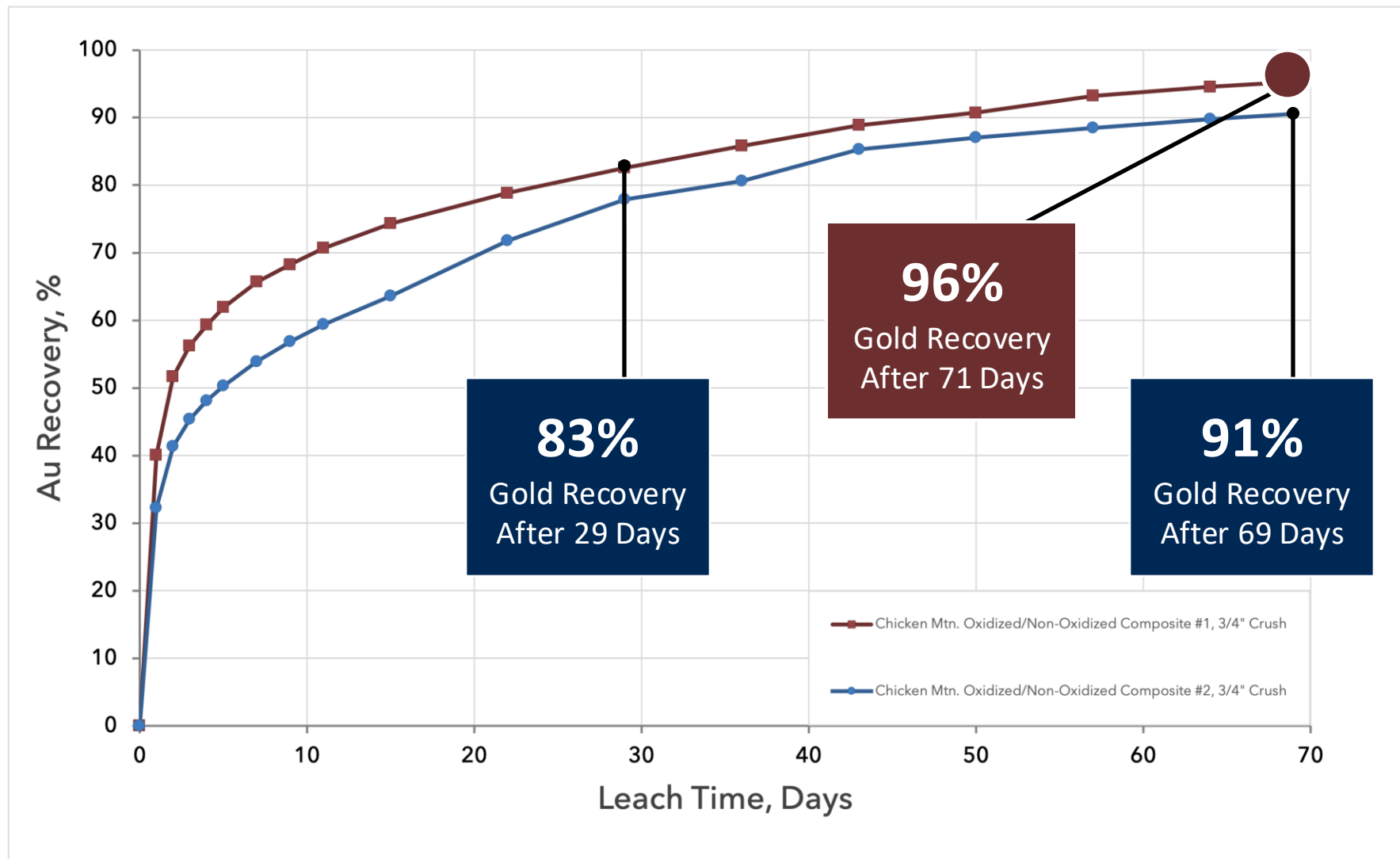
WHY TECTONIC?

Leveraging Metallurgy: Making Every Ounce Count



POTENTIAL FOR RUN-OF-MINE HEAP LEACH PROCESSING IN PLAY

96% Gold Recovery: Heap Leach Column Tests on Coarse 3/4" Crushed Material



NON-OXIDIZED AND MINERALIZATION AT DEPTH LEACHES

STRONG & RAPID LEACH KINETICS

NO AGGLOMERATION REQUIRED

POTENTIAL FOR RUN-OF-MINE HEAP LEACHING

MULTIPLE MET TESTING CONFIRM FREE-MILLING / NON-REFRACTORY MINERALIZATION

Conventional Bottle Roll, Gravity, Combined Gravity & Bottle Roll, and Flotation

**Strong and rapid
leach kinetics**

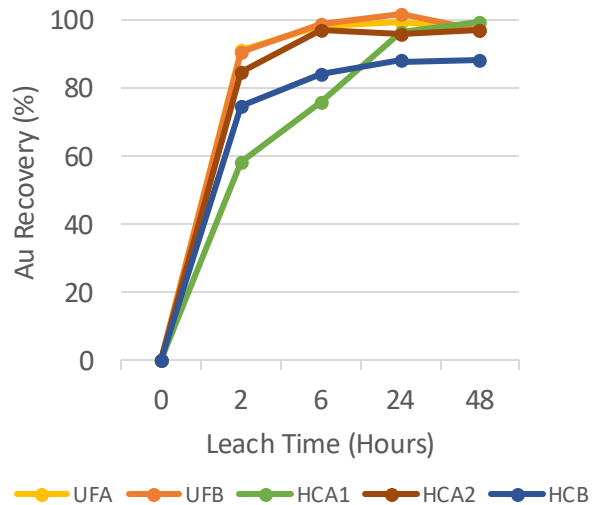
**Very low cyanide
consumption**

**Low sulphur
content**

**No preg robbing
identified**

96% Avg. Gold Recovery Validates Potential for Heap Leach Processing

48 Hour Leach Kinetics K80 75µm Grind



Composite	Mineralization Type	Calculated Head Grade Au g/t	Consumption (kg/t)		AU Recovery % Leach Kinetics (hour)				
			NaCN	Ca(OH) ₂	2	6	24	48	Total
UFA	Oxide	1.66	0.24	2.57	90.9	98.1	99.4	96.7	96.7
UFB	Oxide	0.68	0.19	1.23	90.4	98.8	101.6	97.1	97.1
HCA1	Oxide	0.75	0.28	2.91	58.0	76.0	96.0	99.1	99.1
HCA2	Oxide	1.05	0.17	2.89	84.5	96.7	95.8	97.0	97.0
HCB	Oxide	1.32	0.23	0.92	74.8	83.7	88.2	88.3	88.3

BRAND NEW CORE FACILITY BUILT IN 2025

Visit our Phase 1 and 2 Virtual Drill Core Shack Webinars

Watch the **Phase 1** Core Shack Recording



Watch the **Phase 2** Core Shack Recording



**Scan to receive
our newsletter**



**TSXV: TECT
OTCQB: TETOF
FRA: T15B**

www.tectonicmetals.com

info@tectonicmetals.com

1.888.685.8558

APPENDIX BELOW

REFERENCE LIST

*HISTORICAL PLACER PRODUCTION FIGURES (SLIDE 13)

- Placer production figures from "[Mineral Occurrence and Development Potential Report, Locatable and Salable Minerals, Bering Sea-Western Interior Resource Management Plan, BLM-Alaska](#)"

SLIDE 5: JURISDICTIONAL SAFETY: ALASKA'S TIER-1 ADVANTAGE

- Donlin Gold receives Fast-41 Status Approval see [Federal Permitting Improvement Steering Council](#) and NOVAGOLD Press Release: "[NOVAGOLD Reports High-Grade Drill Results and Receives Positive Decision From Alaska Supreme Court](#)" (November 25, 2025).
- Trilogy Metals Announces Strategic Investment by US Federal Government" see [SEC.gov - Trilogy Metals Exhibit 99.1](#) (Oct 6, 2025)
- [Department of War Awards \\$43.4 Million to Further On-Shore Antimony Trisulfide Production](#)
- See [Glenfame and Donlin Gold Sign Letter of Intent for Alaska Gas and Infrastructure](#)
- In 2024, Nevada accounted for a approximately **70%** of total domestic production, followed by **Alaska with 16%**. Source: [USGS Mineral Commodity Summaries 2025 - Gold](#)

SLIDE 14: OBLIQUE VIEW OF FLAT PROJECT AREA, GEOPHYSICS 7200 HZ EM

See Tectonic Press Release: [January 15, 2025](#).

SLIDE 18: 3.3KM OF DRILLED MINERALIZED STRIKE, 325 METRE VERTICAL DEPTH – OPEN IN ALL DIRECTIONS

See Tectonic Press Release: [February 5, 2026](#).

SLIDE 19: SIGNIFICANT DEPTH EXPANSION POTENTIAL & STARTER PIT OPPORTUNITIES

See: Tectonic Press Release [February 5, 2026](#)

SLIDE 21: WITH A 100% DRILL SUCCESS RATE, GOLD-IN-SOIL ANOMALIES INDICATE POTENTIAL DEPOSIT SIZE

- Dec. 31, 2022, Annual Mineral and Resource Statement. Proven & Probable Mineral Reserves 1,935koz Au. Mineral Resources are estimated at a cutoff grade of 0.30 g/t Au.
- Snowline Gold Corp. (2025, May 15). Snowline Gold expands measured and indicated gold ounces by 96% in updated mineral resource estimate at its Valley gold deposit, Yukon. Junior Mining Network.
- Donlin 2021 NI 43-101 Technical Report: Tonnage: 541,337kt at 2.24g/t Au. Measured & Indicated: 39,007koz Au. Assuming an average recovery of 89.5% and average 5% grade of 1.07, the marginal gold cut-off grade is 0.47 g/t. Gold price of \$1,200/oz is assumed

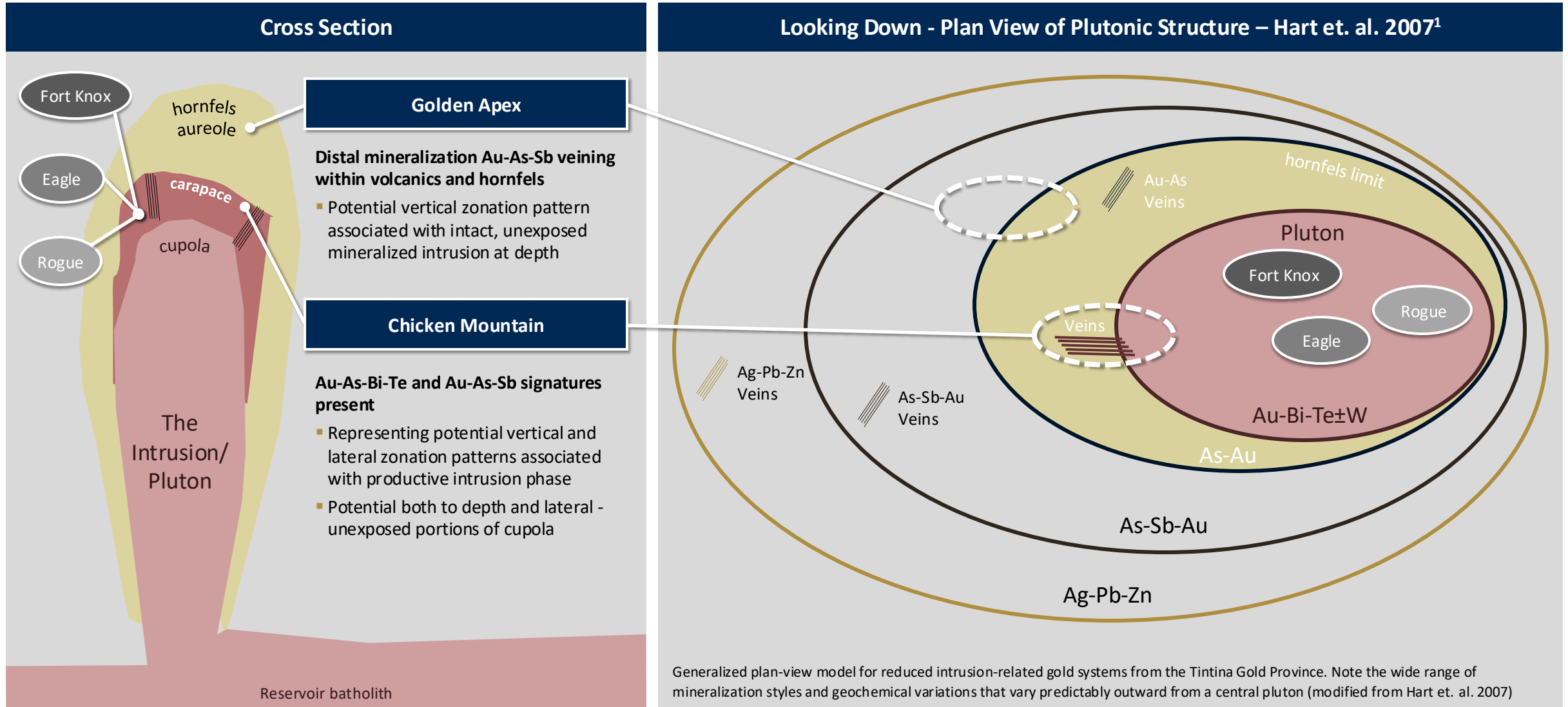
SLIDE 22: THE MILLION-OUNCE QUESTION: HOW MANY METRES TO 5MOZ?

- Great Bear Project Ontario, Canada Voluntary National Instrument 43-101 Technical Report (February 2023), Kinross Gold Corporation. Tonnage: 30,267kt at 2.81 g/t Au. Measured & Indicated Resource 2,738koz Au. Tonnage: 25,480 kt at 4.74 g/t Au. Inferred Resource 3,884koz Au. Open pit resources are estimated at 0.55 g/t Au cutoff, and Underground mineral resources are estimated at 2.3 g/t Au cut off for LP Zone, 2.5 g/t Au cutoff or Limb Zone, 2.4 g/t Au cutoff for Hinge Zone, and 1.7 g/t Au cut off for LP zone where no additional development is required. Gold price of \$1,700/oz is assumed.
- Fuerte Metals News Release September 15 2025; Tonnage: 80,046kt at 1.15 g/t Au, Measured & Indicated Resource 2,957koz. Tonnage 21,200kt at 1.17 g/t Au, Inferred Resource 800koz. Resources are estimated at a cutoff grade between 0.13 and 0.48 g/t Au depending on the metallurgical domain. Gold price of \$2,500/oz is assumed.
- NI43-101 Technical Report, Black Pine Project (June 2024); Tonnage: 402,000kt at 0.32 g/t Au, Indicated Resource 4,163koz. Tonnage 97,700kt at 0.23 g/t Au, Inferred Resource 712koz. Resources are estimates at a 0.1 g/t Au cut off and at a price of \$2,000 per ounce
- Eskay Creek Project, NI 43-101 Technical Report and Feasibility Study (September 2022), Skeena Resources Ltd. Open Pit: Tonnage: 46,508kt at 2.6 g/t Au and 63.2 g/t Ag. Measured & Indicated Resource 3,881koz Au and 94,575koz Ag. Tonnage: 3,420kt at 1.3 g/t Au and 20.2 g/t Ag. Inferred Resource 140koz Au and 2,222koz Ag. Estimated at 0.7 g/t AuEq cutoff. Underground: Tonnage: 1,287kt at 4.5 g/t Au and 91.3 g/t Ag. Measured & Indicated Resource 186koz Au and 3,778koz Ag. Tonnage: 330kt at 3.5 g/t Au and 42.6 g/t Ag. Inferred Resource 37koz Au and 452koz Ag. Estimated at 2.4 g/t AuEq cutoff for long-hole mining and 2.8g/t AuEq for drift and fill mining methods. Cut-off grades are based on a price of US\$1,700 per ounce of gold, US\$23 per ounce silver, and gold recoveries of 90%, silver recoveries of 80% and without considering revenues from other metals. AuEq = Au (g/t) + (Ag (g/t)/74).
- NI 43-101 Technical Report and Pre-Feasibility Study on the Springpole Gold Project, Ontario, Canada (December 2025), First Mining Gold Corp. Tonnage: 191Mt at 0.78 g/t Au and 4.6 g/t Ag. Indicated Resource: 4,800 koz Au and 28,000 koz Ag. Tonnage: 38 Mt at 0.38 g/t Au and 3.1 g/t Ag. Indicated Resource: 800koz Au and 6,500koz Ag. Resources are estimated at 0.2 g/t Au cutoff and a Gold Price of \$2,450/oz and a silver price of \$27.50/oz was assumed.
- Technical Report AurMac Property Mayo Mining District Yukon Territory, Canada (June 2025), Banyan Gold. Tonnage: 112.5 Mt at 0.63 g/t Au. Indicated Resource: 2,274koz Au. Tonnage: 280.6Mt at 0.6 g/t Au. Inferred Resource: 5,453koz Au. Indicated and Inferred Resources are estimated at 0.3 g/t Au cutoff and Gold price of \$2,050/oz is assumed.
- Independent Preliminary Economic Assessment for the Rough Project Yukon, Canada (August 2025), Snowline Gold Corp. Tonnage: 204.0 Million Tonnes at 1.21 g/t Au. Measured & Indicated: 7,940 koz, Tonnes: 44.5 Million Tonnes at 0.62 g/t Au. Inferred: 890koz. Mineral Resources are estimated at a 0.30 g/t Au cutoff grade, gold price of \$2,350/oz is assumed.



REDUCED INTRUSION-RELATED GOLD SYSTEMS

Geochemistry, Veining and Host Rock are Key Indicators of Proximity to Cupola



GEOPHYSICS DEMONSTRATE A +11KM LONG INTRUSIVE COMPLEX

Chicken Mountain East & Golden Apex Likely Mineralized Based on Current Evidence

