



TECTONIC
METALS INC.

FLAT GOLD PROJECT CHICKEN MOUNTAIN

POTENTIAL OPEN-PIT, MULTI-MILLION OUNCE OPPORTUNITY

FORWARD LOOKING STATEMENT AND NATIONAL INSTRUMENT 43-101 COMPLIANCE

All statements in this presentation, other than statements of historical fact, are "forward-looking statements" or "forward looking information" with respect to Tectonic Metals Inc. (the "Company") within the meaning of applicable securities laws, including statements that address pro forma capitalization tables, the size and use of proceeds of any proposed financings, the discovery and development of gold deposits, potential size of a mineralized zone, potential expansion of mineralization and timing of exploration and development plans. Forward-looking information is often, but not always, identified by the use of words such as "seek", "anticipate", "plan", "continue", "planned", "expect", "project", "predict", "potential", "targeting", "intends", "believe", and similar expressions, or describes a "goal", or variation of such words and phrases or state that certain actions, events or results "may", "should", "could", "would", "might" or "will" be taken, occur or be achieved. Forward-looking information is not a guarantee of future performance and is based upon a number of estimates and assumptions of management at the date the statements are made including, among others, assumptions regarding timing of exploration and development plans at the Company's mineral projects; timing and completion of proposed financings; timing and likelihood of deployment of additional drill rigs; successful delivery of results of metallurgical testing; the release of an initial resource report on any of our properties; assumptions about future prices of gold, copper, silver, and other metal prices; currency exchange rates and interest rates; metallurgical recoveries; favourable operating conditions; political stability; obtaining governmental approvals and financing on time; obtaining renewals for existing licences and permits and obtaining required licences and permits; labour stability; stability in market conditions; availability of equipment; accuracy of historical information; successful resolution of disputes and anticipated costs and expenditures. Many assumptions are based on factors and events that are not within the control of the Company and there is no assurance they will prove to be correct.

Such forward-looking information involves known and unknown risks, which may cause the actual results to be materially different from any future results expressed or implied by such forward-looking information, including, but not limited to, the cost, timing and success of exploration activities generally, including the development of new deposits; possible variations in grade or recovery rates; failure of equipment or processes to operate as anticipated; the failure of contracted parties to perform; uses of funds in general including future capital expenditures, exploration expenditures and other expenses for specific operations; the timing, timeline and possible outcome of permitting or license renewal applications; government regulation of exploration and mining operations; environmental risks; the uncertainty of negotiating with foreign governments; expropriation or nationalization of property without fair compensation; adverse determination or rulings by governmental authorities; delays in obtaining governmental approvals; possible claims against the Company; the impact of archaeological, cultural or environmental studies within property areas; title disputes or claims; limitations on insurance coverage; the interpretation and actual results of historical operators at certain of our exploration properties; changes in project parameters as plans continue to be refined; current economic conditions; future prices of commodities; and delays in obtaining financing. The Company's forward-looking information reflect the beliefs, opinions, and projections on the date the statements are made. The Company assumes no obligation to update forward-looking information or beliefs, opinions, projections, or other factors, should they change, except as required by law.

The Company makes no representation or warranty regarding the accuracy or completeness of any historical data from prior exploration undertaken by others other than the company and has not taken any steps to verify, the adequacy, accuracy or completeness of the information provided herein and, under no circumstances, will be liable for any inaccuracies or omissions in any such information or data, any delays or errors in the transmission thereof, or any loss or direct, indirect, incidental, special or consequential damages caused by reliance on this information or the risks arising from the stock market.

Prospective investors should not construe the contents of this presentation as legal, tax, investment, accounting or other advice. Prospective investors are urged to consult with their own advisors with respect to legal, tax, regulatory, financial, accounting and other such matters relating to their investment in the Company.

The Company securities have not been approved or disapproved by the U.S. Securities and Exchange Commission or by any state, provincial or other securities regulatory authority, nor has the U.S. Securities and Exchange Commission or any state, provincial or other securities regulatory authority passed on the accuracy or adequacy of this presentation. Any representation to the contrary is a criminal offense.

The Company is incorporated under the laws of British Columbia, Canada. Many of the Company's assets are located outside the United States and most or all of its directors and officers are residents of countries other than the United States. As a result, it may be difficult for investors in the United States to effect service of process within the United States upon the Company or such directors and officers, or to realize in the United States upon judgments of courts of the United States predicated upon civil liability of the Company and its directors and officers under the United States federal securities laws.

Peter Kleespies, M.Sc., P.Geol, Vice President for Tectonic Metals Inc, is the Qualified Person for the Company as defined by National Instrument 43-101, and is responsible for reviewing and approving the scientific and technical content of all materials publicly disclosed by Tectonic, including the contents of this presentation.

TODAY'S PRESENTERS



Tony Reda

President and Chief Executive Officer

1-888-685-8558

tony@tectonicmetals.com



Steven Therrien

Mining Analyst

+1 (807) 252-2747

steven@3l-capital.com



Tom McMillan

Investor Relations

+1 (403) 466-7220

tom@tectonicmetals.com



3L CAPITAL

Exclusive Boutique Investment Bank Exempt Market Dealer

Extensive Widespread Network and Distribution Channels within the Investment Community

8 Partners with a Strategic Goal of Expanding to a Total of 12-15 Partners

Capital Markets Expertise, Financings, Marketing, Webinars and Tailored Research

Contact Us

E: Contact@3L-Capital.com

LinkedIn: [3L-Capital](#)

X: [@3L_Capital](#)



TECTONIC
METALS INC.

FLAT GOLD PROJECT CHICKEN MOUNTAIN

POTENTIAL OPEN-PIT, MULTI-MILLION OUNCE OPPORTUNITY

TECTONIC 2023 DRILL PROGRAM HIGHLIGHTS

Upgraded Infrastructure



Multi-year Camp Established

Built following four successful deliveries of camp materials to Flat Airstrip by a Hercules C-130 Transport Aircraft. Camp facilities remain onsite,



Field Mapping and Prospecting

Doyon, Ltd., investors, mining analysts and Board of Directors

Site Visits

Doyon, Ltd., investors, mining analysts and Board of Directors



Aerial High Resolution LiDar/Orthophoto Survey

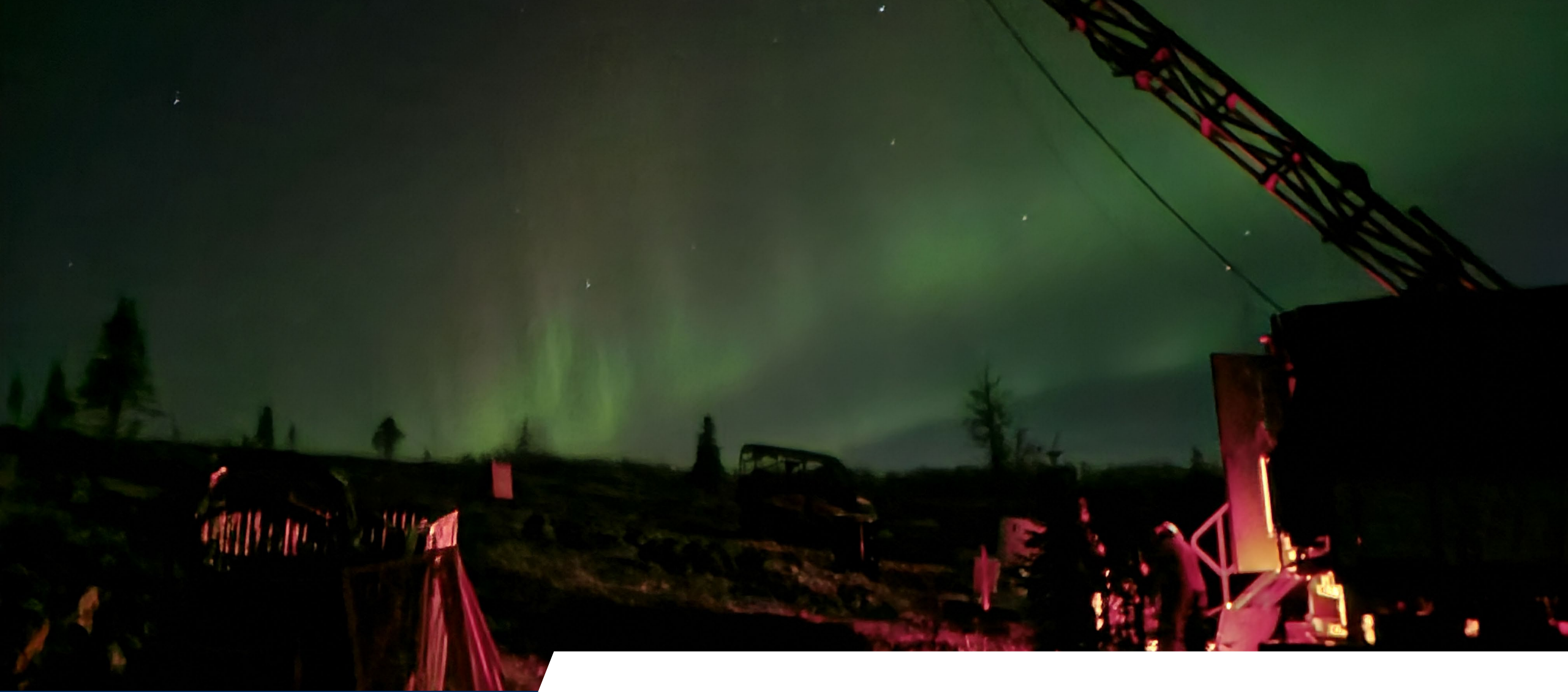


19 drill holes Diamond + RC Drills remain on site



Healthy and Safety

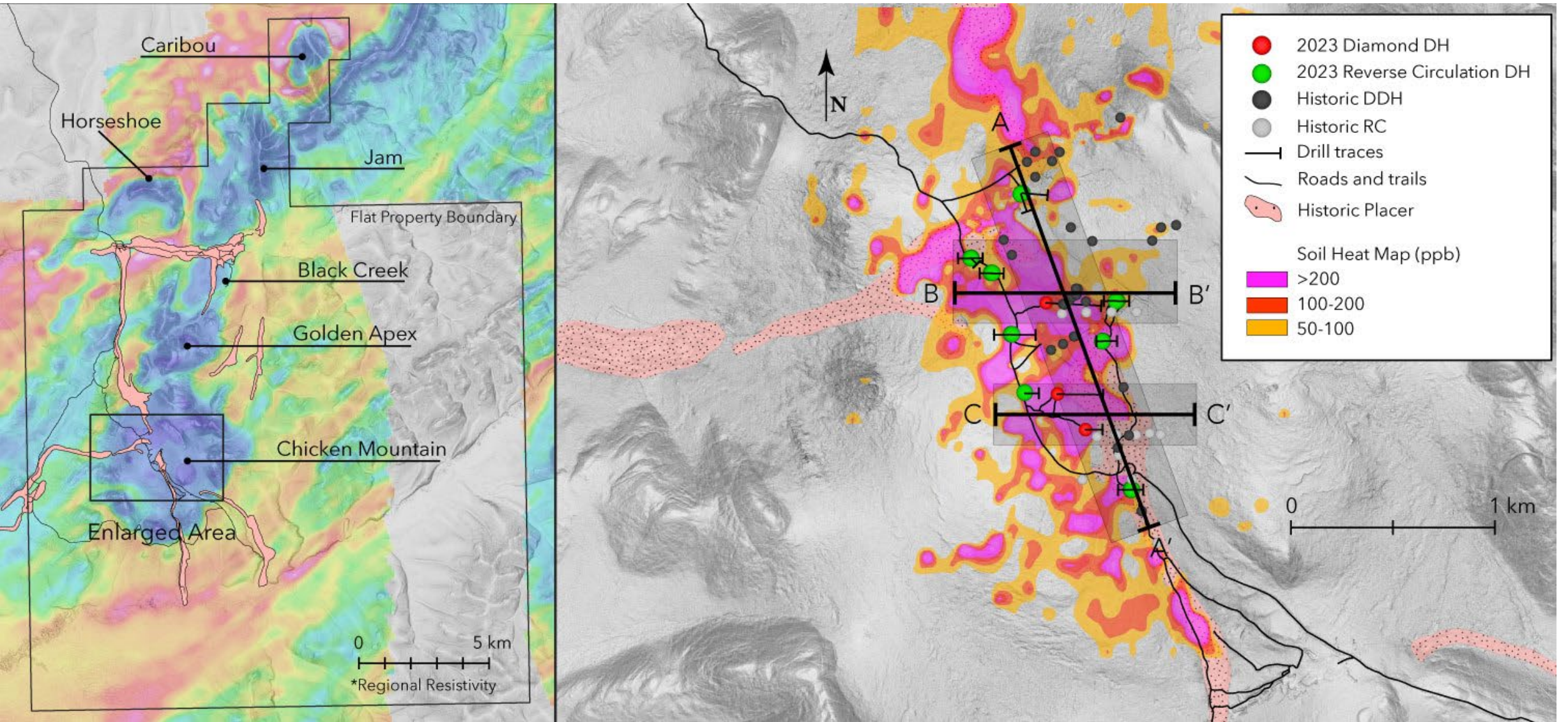
>17,000 work hours with no Lost Time Incidents



TECTONIC
METALS INC.

2023 DRILL PROGRAM OBJECTIVES ACHIEVED

19 DRILL HOLES: OBTAIN STRUCTURAL DATA, EXTEND MINERALIZATION AT DEPTH + ALONG STRIKE & DEMONSTRATE SCALE



2023 DRILL PROGRAM OVERVIEW

COMBINED 1.8 KM OF MINERALIZED STRIKE TO A VERTICAL DEPTH OF 300M - OPEN

2023 drill holes all intersected gold

- ▶ 12 drill holes ended in mineralization
- ▶ Mineralization remains open in all directions
- ▶ Oxidation as deep as 350m down hole
- ▶ Low sulphur in all drill holes
- ▶ Drilling identified a potentially higher-grade (>1.0 g/t Au) lode, open for expansion and warranting drill follow up
- ▶ Chicken Mountain appears to be a Fort Knox / Reduced Intrusion Related Gold System (RIRGS)

~4 km long high tenor gold-in-soil anomaly

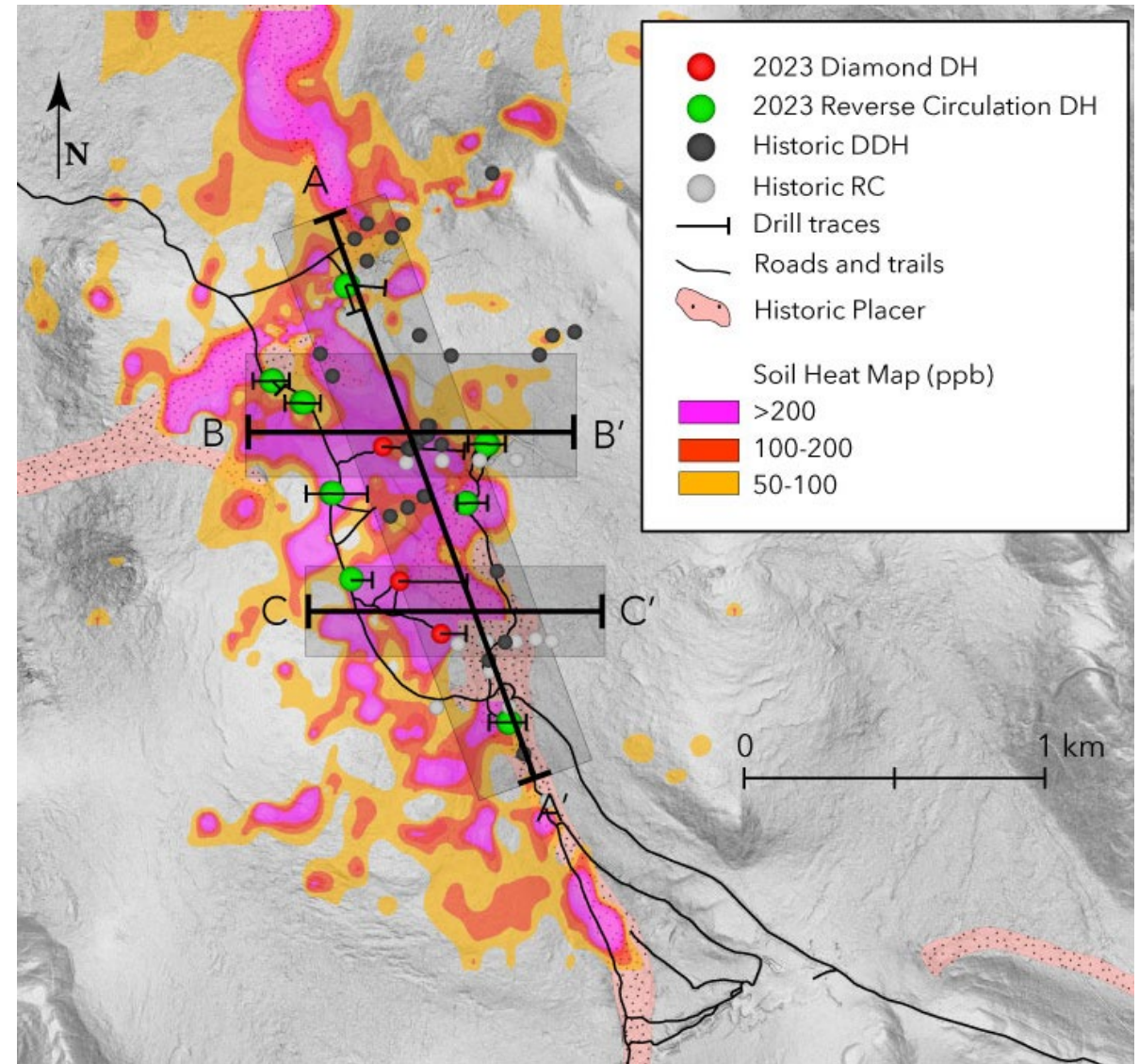
1.4Moz Au of recorded placer production¹

- ▶ Chicken Mtn credited as primary bedrock source for placer gold with every stream draining out of Chicken Mtn. carrying placer gold

96% gold recovery (average)

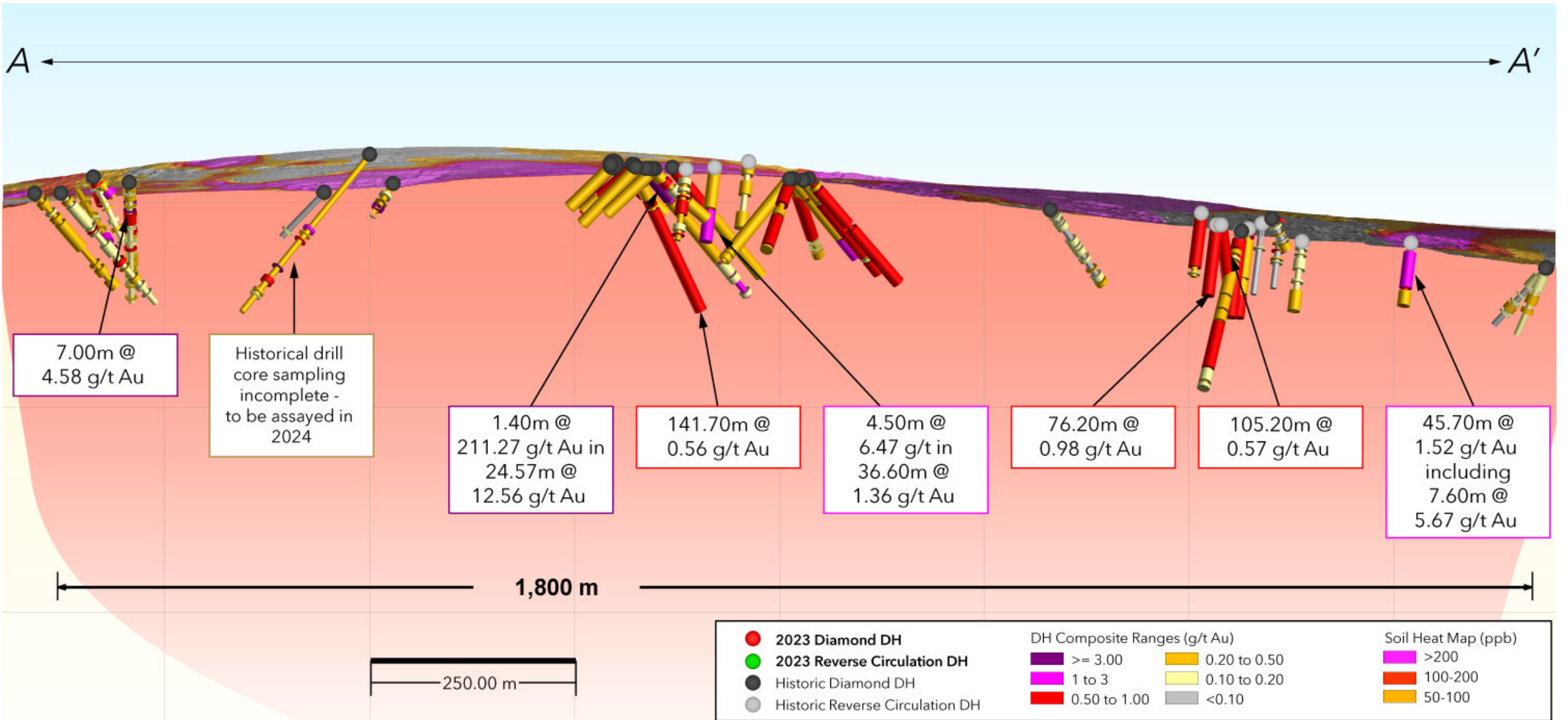
- ▶ Potential open-pit, heap leach opportunity

1) Placer production figures from "Mineral Occurrence and Development Potential Report, Locatable and Salable Minerals, Bering Sea-Western Interior Resource Management Plan, BLM-Alaska Technical Report 60", prepared by the U.S. Department of the Interior, Bureau of Land Management, November 2010



LONG SECTION OF HISTORICAL DRILLING

AVERAGE VERTICAL DEPTH OF ~100 M, MULTIPLE DRILL HOLES ENDING IN MINERALIZATION



Geology

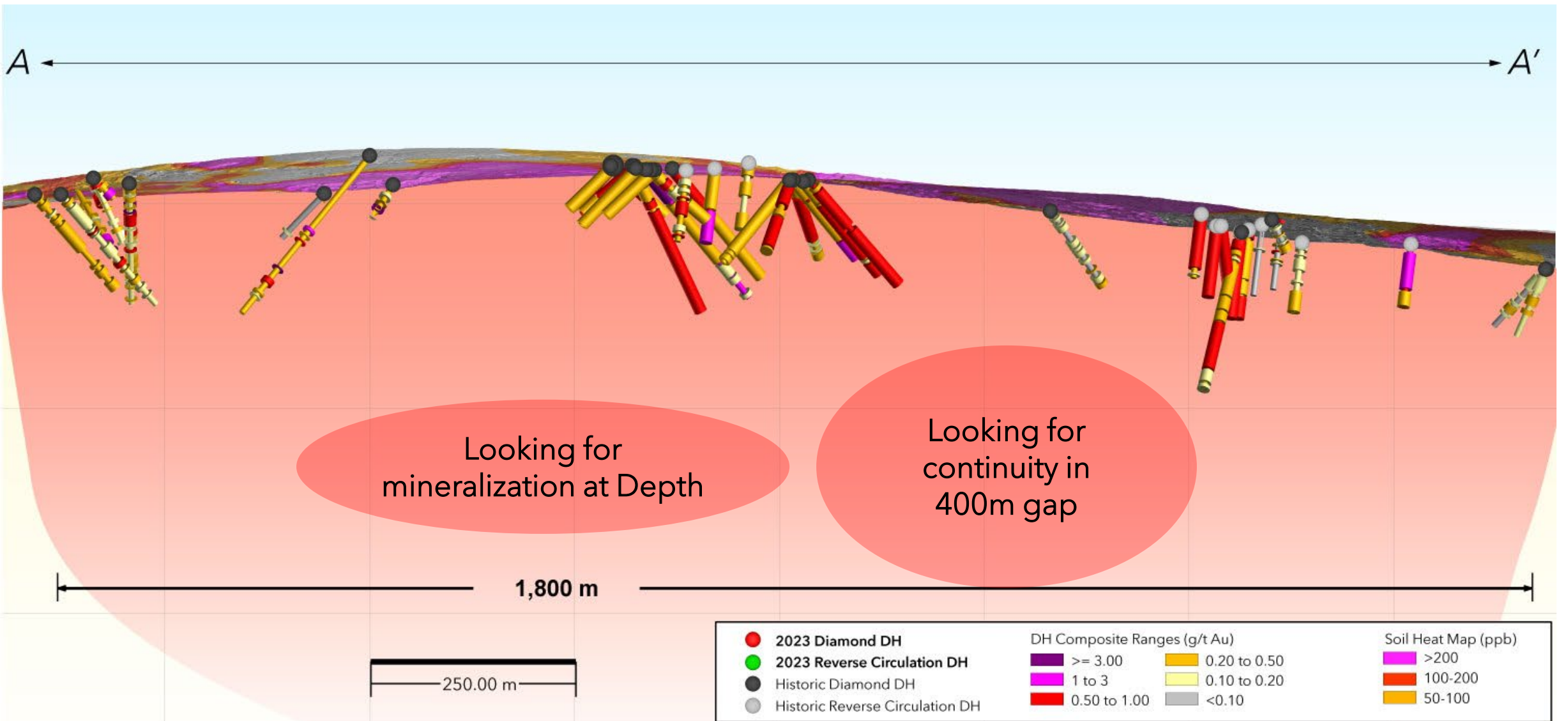
Engineering

ESG

Infrastructure

2023 DRILL PROGRAM EXPLORED DEPTH AND CONTINUITY

2023 DRILL PROGRAM PENETRATED TO ~300 M VERTICAL DEPTH AND EXPLORED 400 M GAP BETWEEN HISTORICAL DRILLED AREAS



Geology

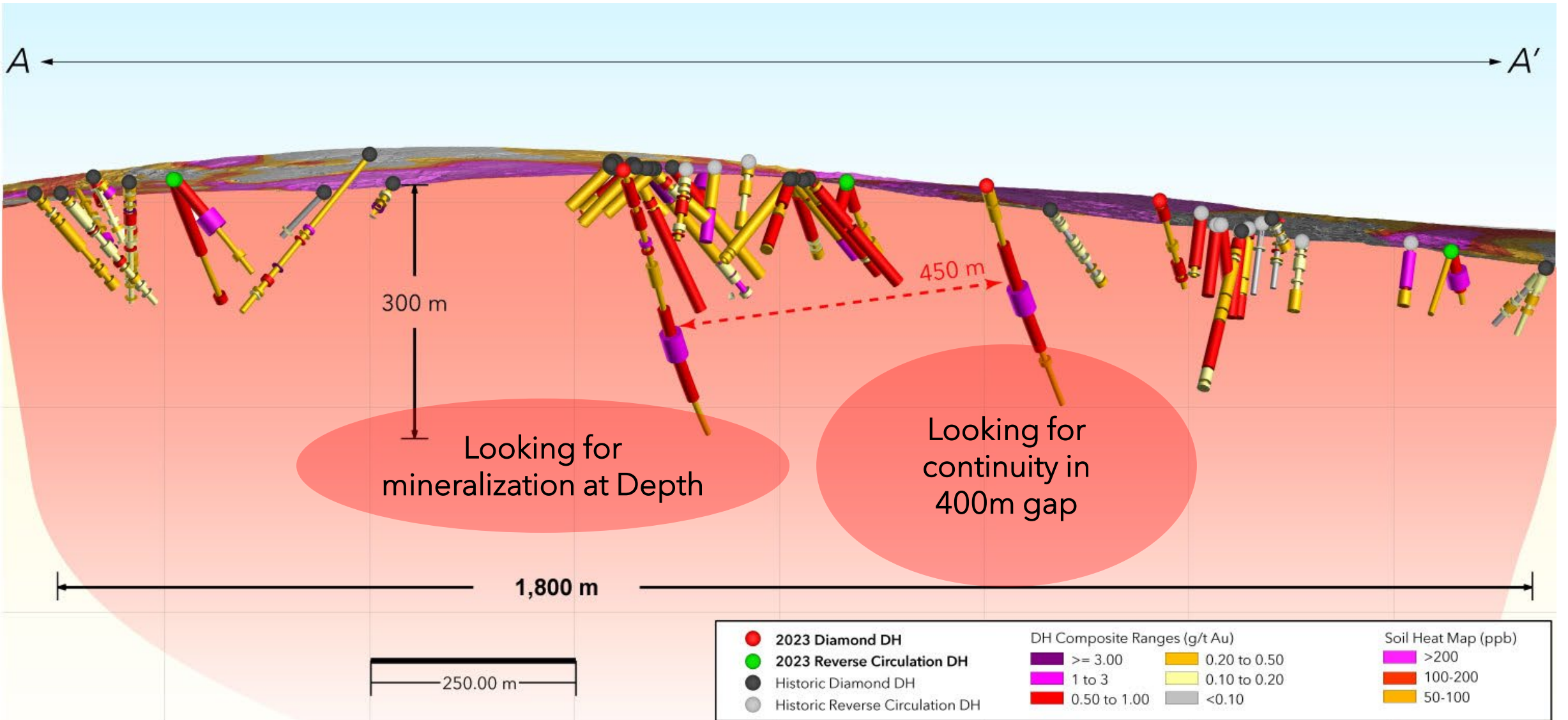
Engineering

ESG

Infrastructure

2023 DRILLING CONFIRMS DEPTH TO 300 M AND CONTINUITY

MINERALIZATION REMAINS OPEN IN ALL DIRECTIONS



Geology

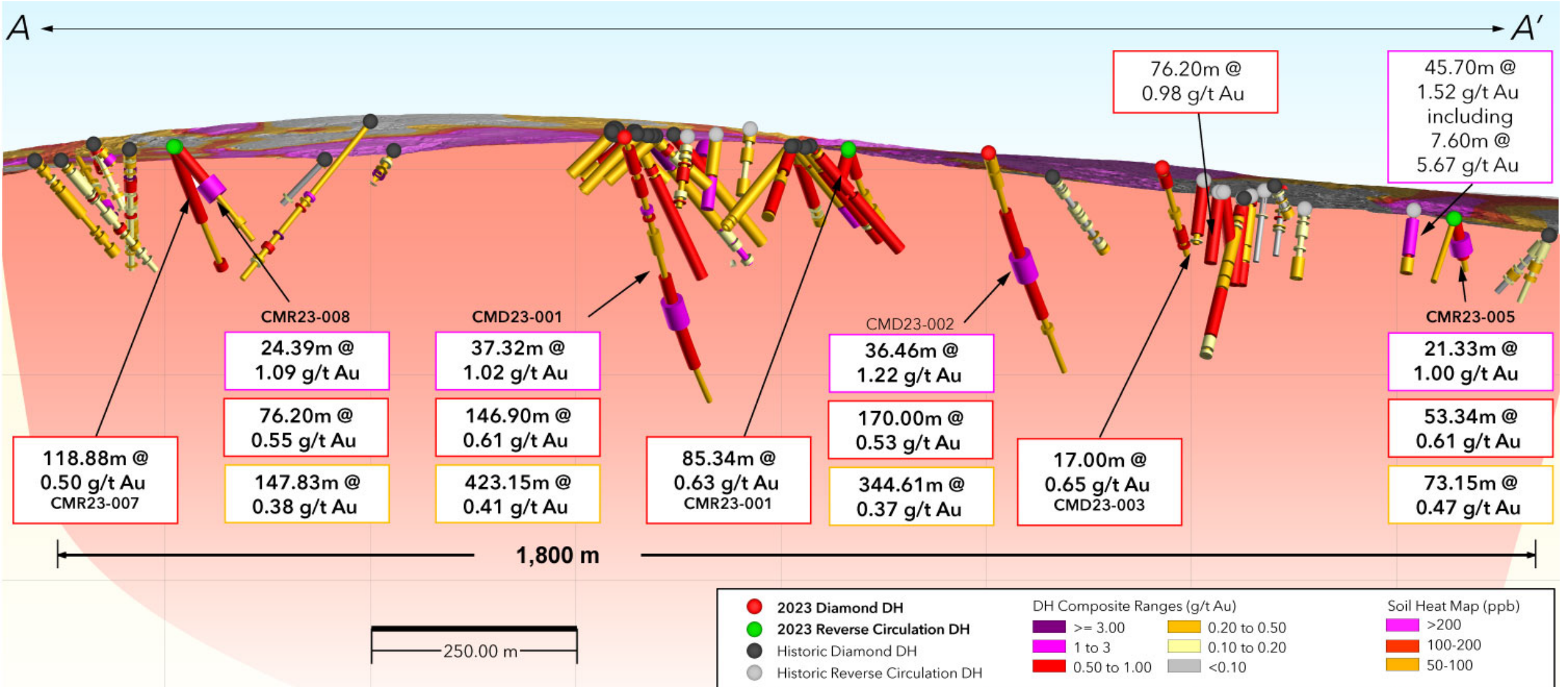
Engineering

ESG

Infrastructure

1.8 KMS MINERALIZED STRIKE, VERTICAL DEPTH 300 M (OPEN)

OPEN-PIT OPPORTUNITY, MULTIPLE HOLES COLLARED AND ENDED IN MINERALIZATION POTENTIAL +1 KMS HIGHER-GRADE (>1.0 G/T AU) LODGE



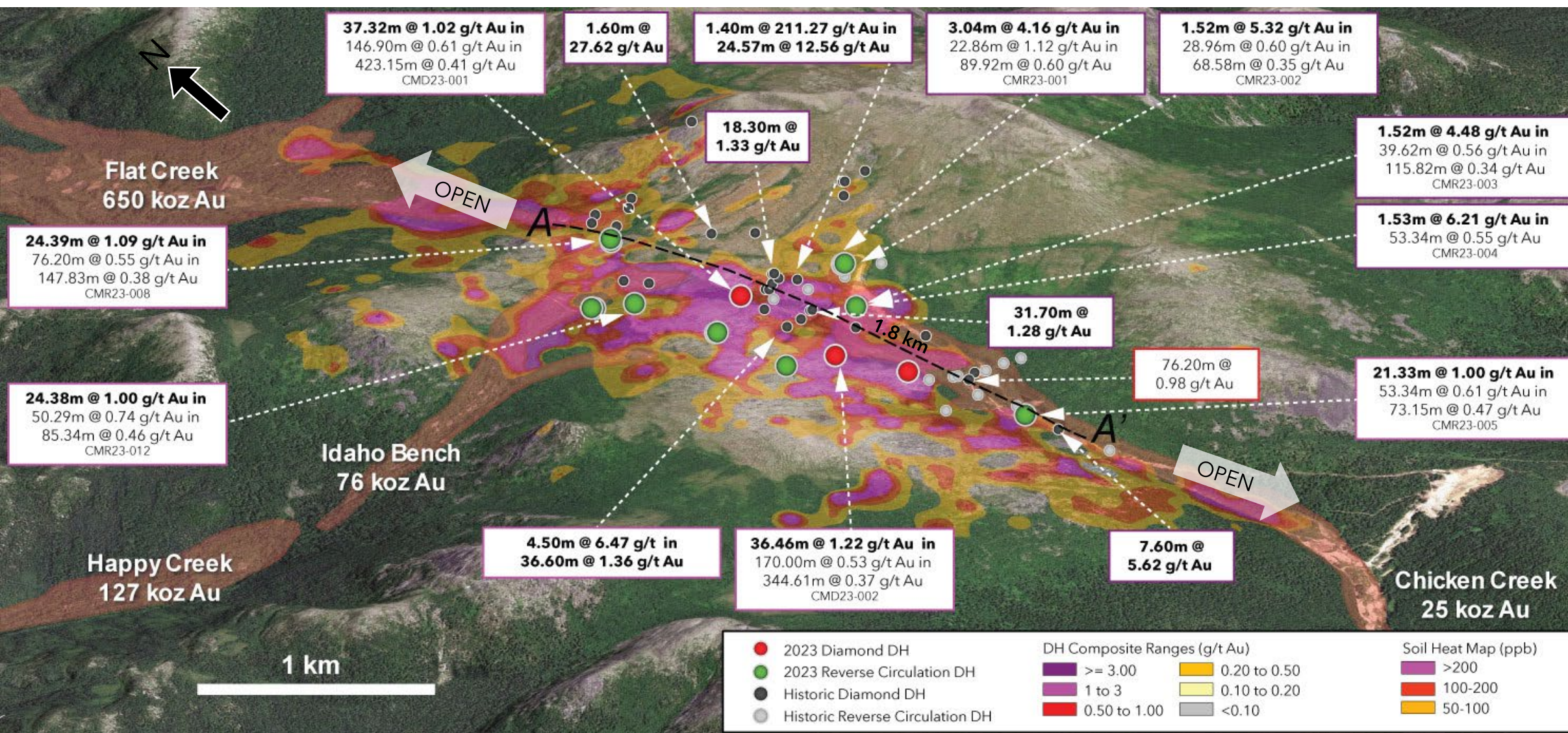
Geology

Engineering

ESG

Infrastructure

CHICKEN MTN TARGET: ALL 74 DRILL HOLES INTERSECTED MINERALIZATION



Geology

Engineering

ESG

Infrastructure



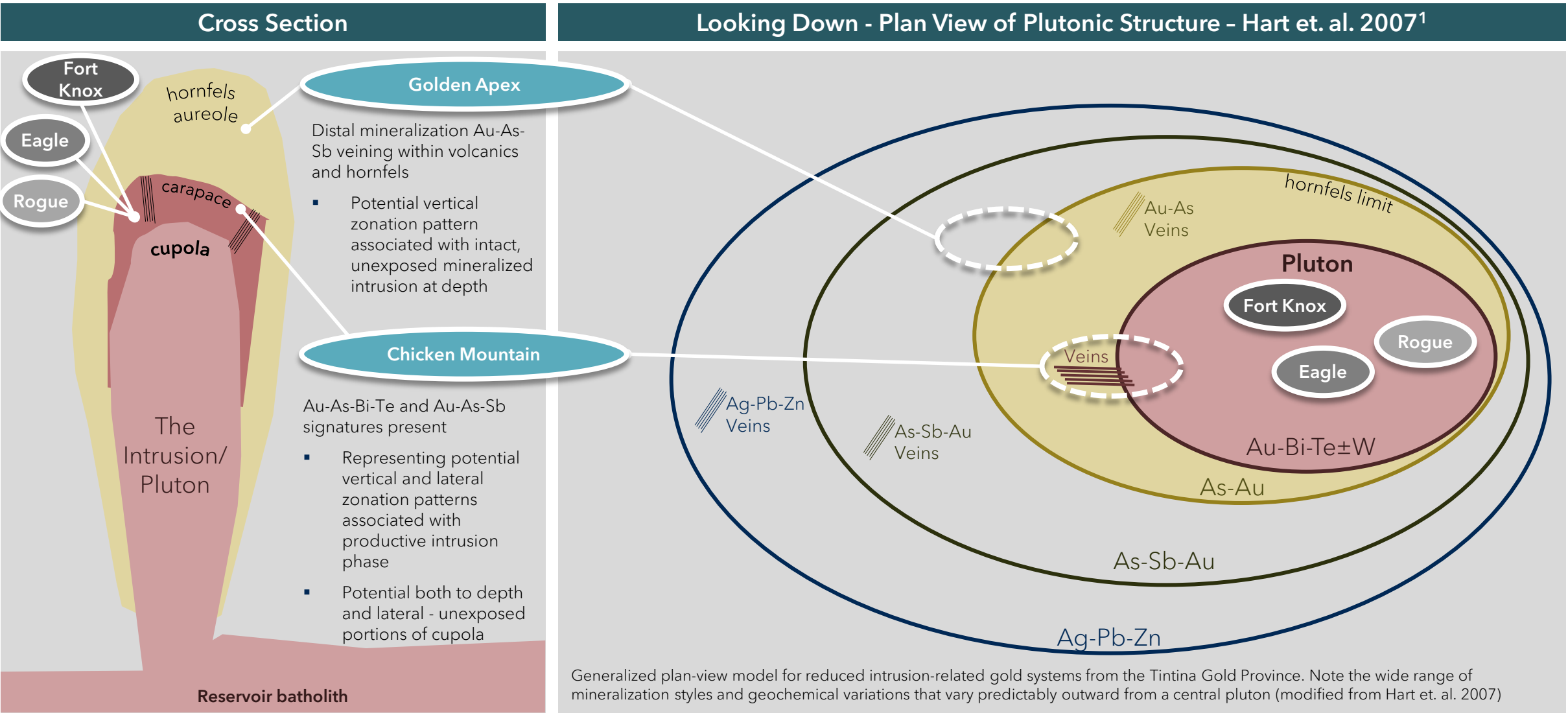
TECTONIC
METALS INC.

INTERPRETING THE RESULTS

REDUCED INTRUSION RELATED GOLD SYSTEM
SIMILAR TO KINROSS' FORT KNOX MINE

REDUCED INTRUSION-RELATED GOLD SYSTEMS

GEOCHEMISTRY, VEINING AND HOST ROCK ARE KEY INDICATORS OF PROXIMITY TO CUPOLA

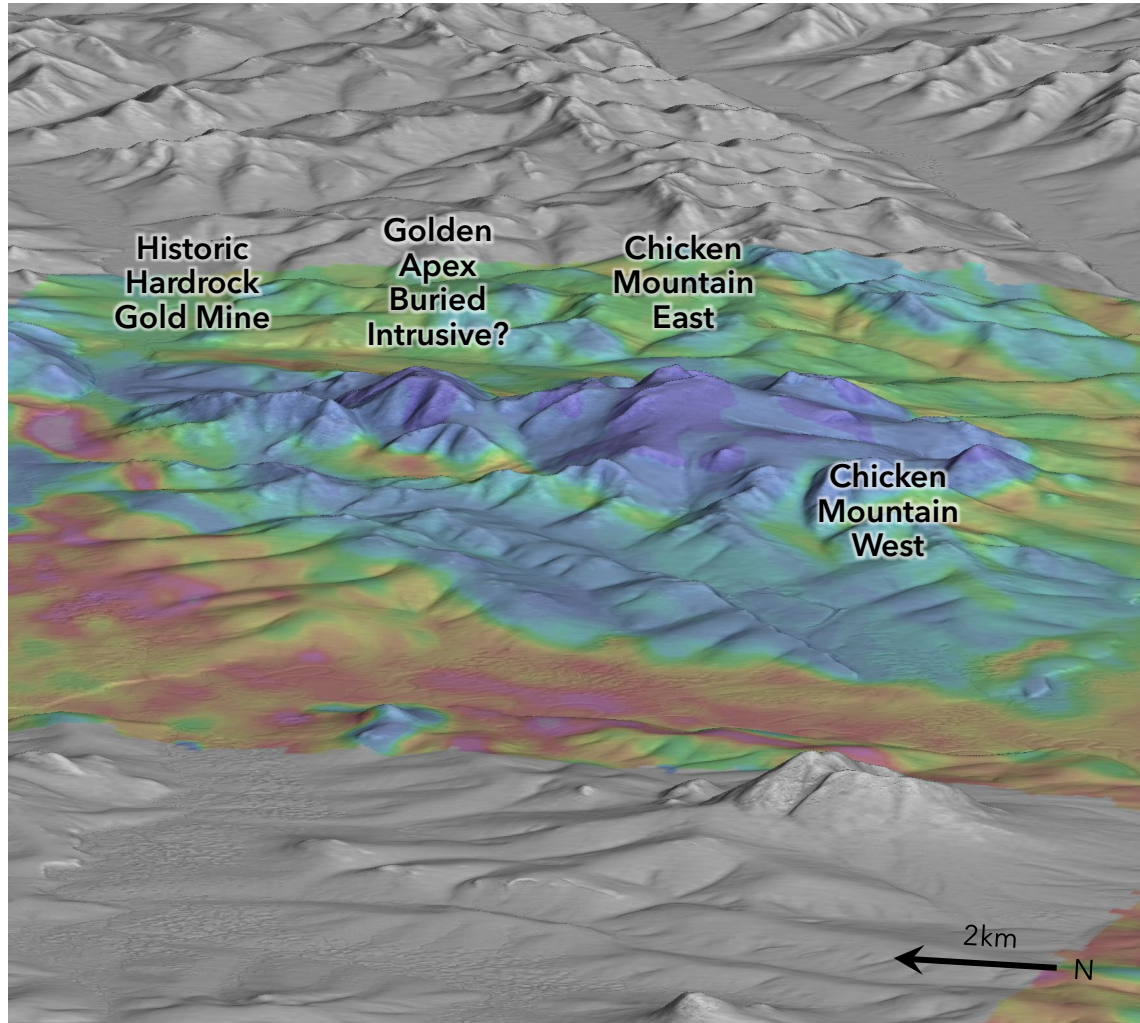


Geology
Engineering
ESG
Infrastructure

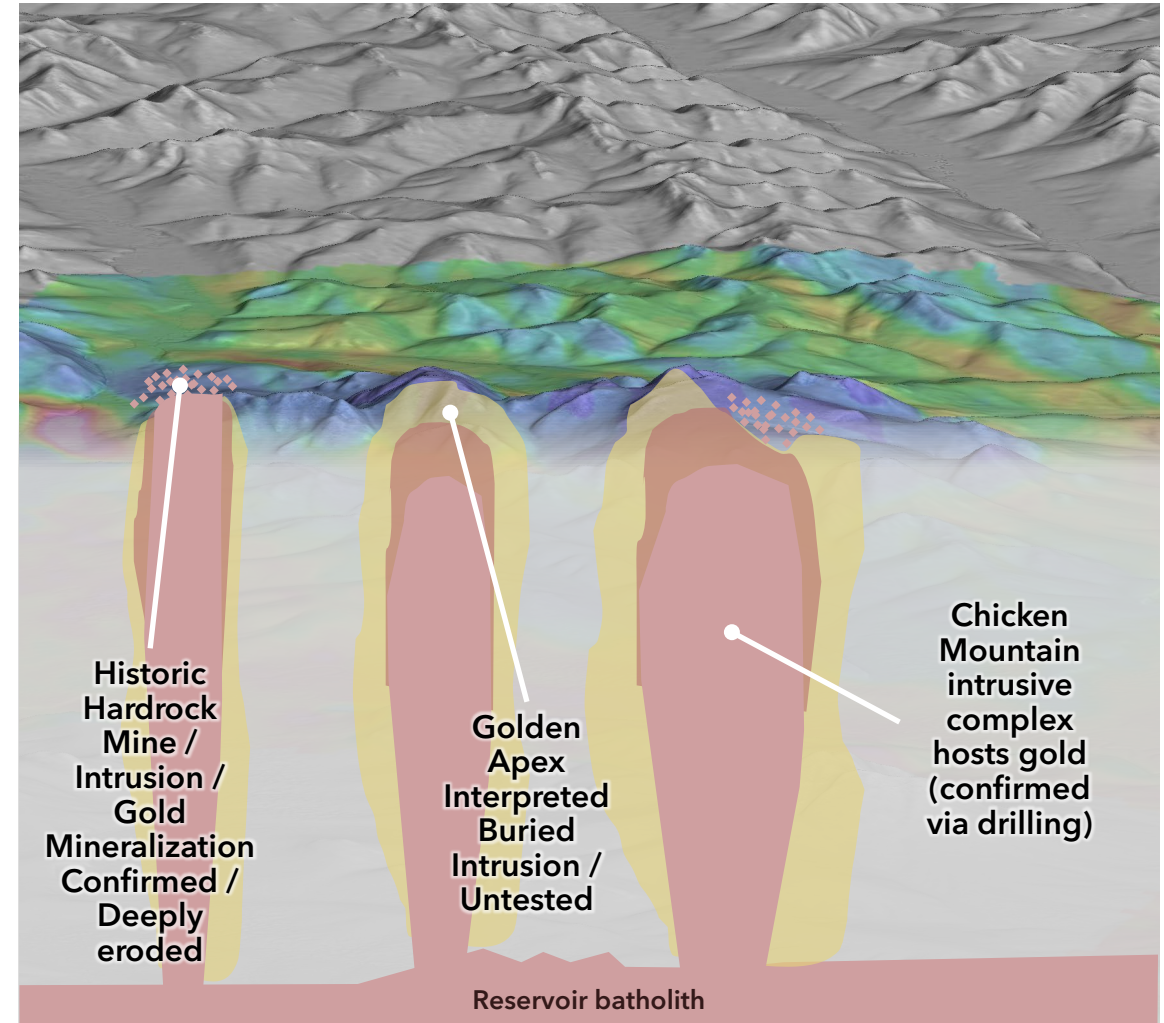
GEOPHYSICS DEMONSTRATE A SERIES OF INTRUSIVE COMPLEXES

CHICKEN MTN EAST AND GOLDEN APEX LIKELY MINERALIZED BASED ON CURRENT EVIDENCE

Oblique View Looking East - Geophysics - 7200 Hz EM



Simplified Cross Section of Intrusion Related Systems



Geology

Engineering

ESG

Infrastructure

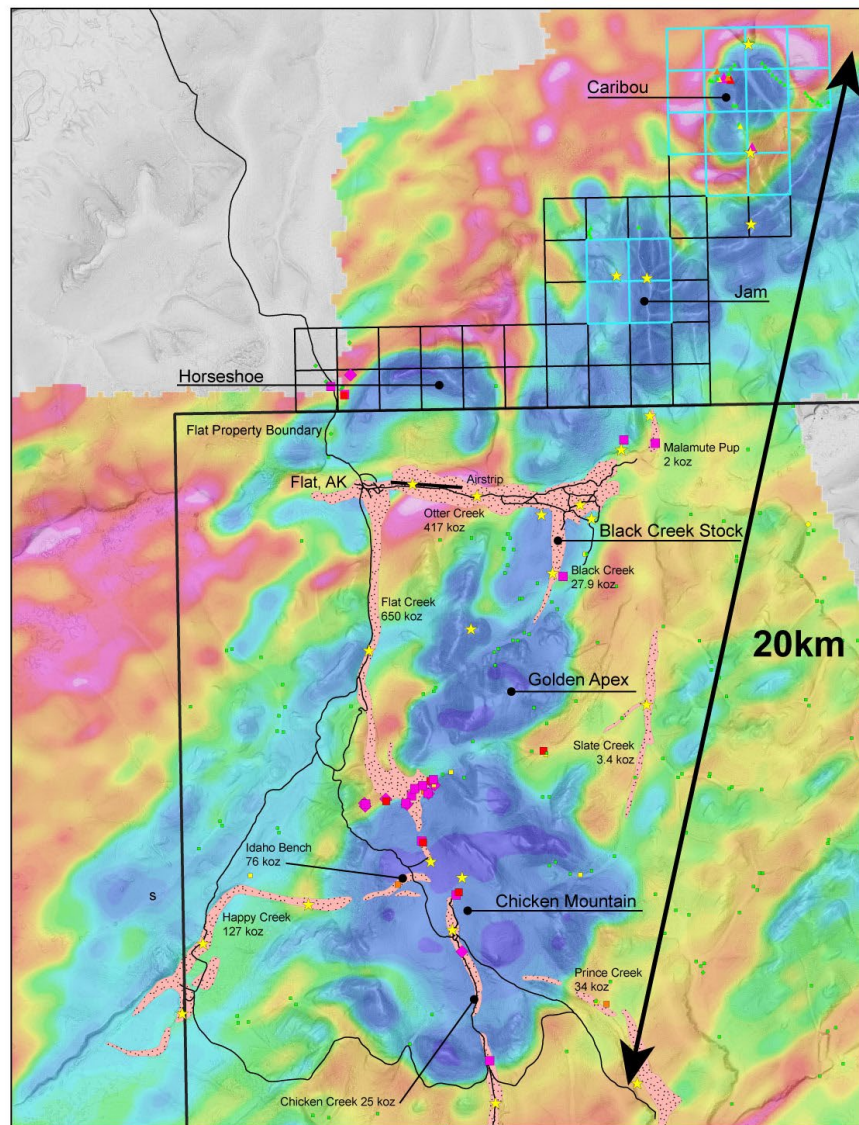
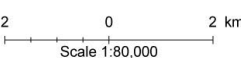
THE FLAT GOLD SYSTEM

20KM "STRING-OF-PEARLS" GEOPHYSICAL TREND WITH SIX CONFIRMED AND POTENTIAL INTRUSIONS

TECTONIC
METALS INC.

- Newly Staked Claims
- Acquired Claims
- ★ Alaska Resource Data File Prospect
- ★ Historic placer
- Roads and trails
- Hercules Capable Airstrip
- TKhf: Hornfels
- TKqm: Quartz Monzonite
- TKm: Monzonite
- TKg: Granite
- TKgb: Gabbro
- TKum: Ultramafic
- TKvm: Mafic
- TKvi: Intermediate

- Assays**
- Stream sediment (ppb)**
- >200
 - 100-200
 - 50-100
 - 25-50
 - 0-25
- Pan concentrate (ppb)**
- ◆ >200
 - ◆ 100-200
 - ◆ 50-100
 - ◆ 25-50
 - ◆ 0-25
- Rock/Grab samples (ppb)**
- ▲ >200
 - ▲ 100-200
 - ▲ 50-100
 - ▲ 25-50
 - ▲ 0-25



Intrusion Target	Intrusion Status	Area of Geophysical Anomaly	Known, Recorded Placer Production from Drainages in Immediate Vicinity ¹
Caribou	Potential	1.7 km x 2.1 km	N/A
Jam	Potential	3.4 km x 5.5 km	419,000 oz (Otter and Malamute Pup)
Horseshoe	Potential	3.0 km x 2.0 km	417,000 oz (Otter Creek)
Black Creek Stock	Confirmed	1.5 km x 1.5 km	445,000 oz (Otter and Black Creek)
Golden Apex	Potential	2.5 km x 2.5 km	682,000 oz (Flat, Slate, Black Creeks)
Chicken Mountain	Confirmed	6.5 km x 5.6 km	954,000 oz (Flat, Happy, and others)

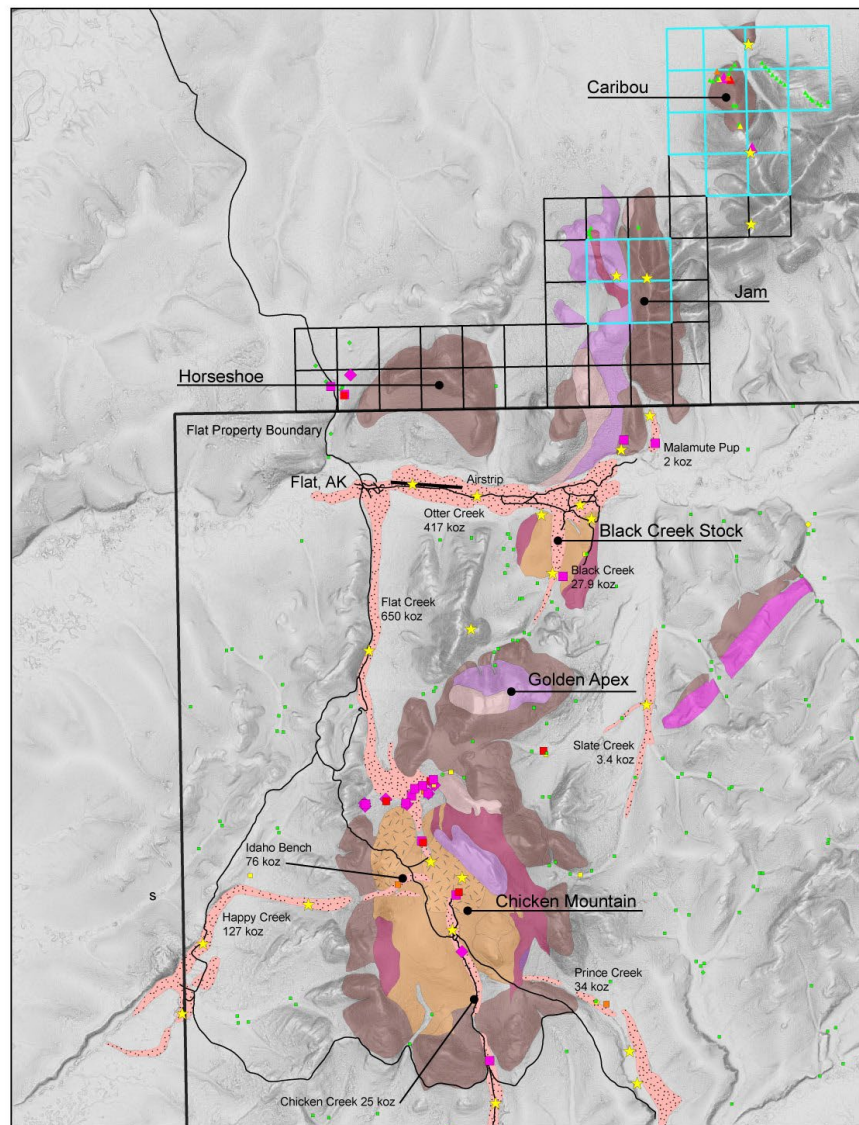
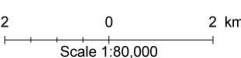
THE FLAT GOLD SYSTEM

20KM "STRING-OF-PEARLS" GEOPHYSICAL TREND WITH SIX CONFIRMED AND POTENTIAL INTRUSIONS



- Newly Staked Claims
- Acquired Claims
- ★ Alaska Resource Data File Prospect
- ★ Historic placer
- Roads and trails
- Hercules Capable Airstrip
- TKhf: Hornfels
- TKqm: Quartz Monzonite
- TKm: Monzonite
- TKg: Granite
- TKgb: Gabbro
- TKum: Ultramafic
- TKvm: Mafic
- TKvi: Intermediate

- Assays**
- Stream sediment (ppb)**
- >200
 - 100-200
 - 50-100
 - 25-50
 - 0-25
- Pan concentrate (ppb)**
- ◆ >200
 - ◆ 100-200
 - ◆ 50-100
 - ◆ 25-50
 - ◆ 0-25
- Rock/Grab samples (ppb)**
- ▲ >200
 - ▲ 100-200
 - ▲ 50-100
 - ▲ 25-50
 - ▲ 0-25



Intrusion Target	Intrusion Status	Area of Geophysical Anomaly	Known, Recorded Placer Production from Drainages in Immediate Vicinity ¹
Caribou	Potential	1.7 km x 2.1 km	N/A
Jam	Potential	3.4 km x 5.5 km	419,000 oz (Otter and Malamute Pup)
Horseshoe	Potential	3.0 km x 2.0 km	417,000 oz (Otter Creek)
Black Creek Stock	Confirmed	1.5 km x 1.5 km	445,000 oz (Otter and Black Creek)
Golden Apex	Potential	2.5 km x 2.5 km	682,000 oz (Flat, Slate, Black Creeks)
Chicken Mountain	Confirmed	6.5 km x 5.6 km	954,000 oz (Flat, Happy, and others)



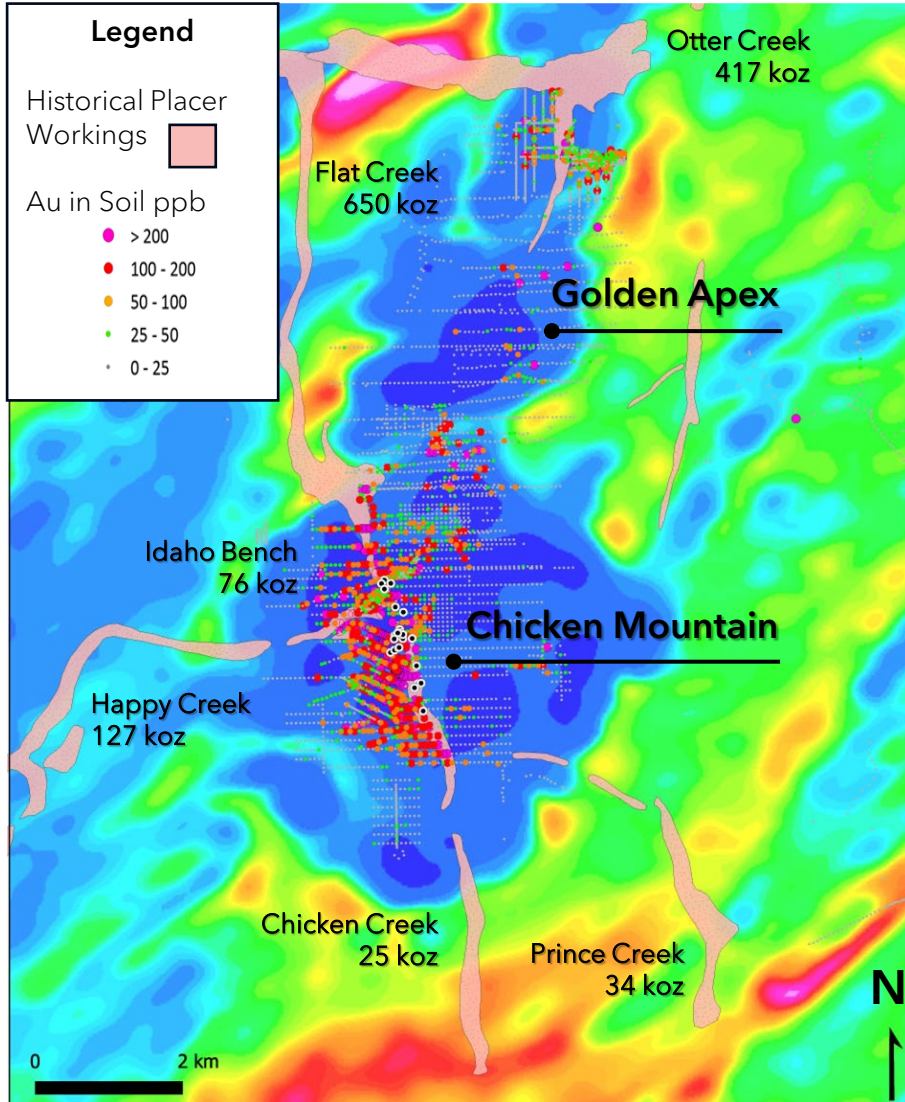
TECTONIC
METALS INC.

NEXT STEPS FOR 2024 AND BEYOND

REDUCED INTRUSION RELATED GOLD SYSTEM
SIMILAR TO KINROSS' FORT KNOX MINE

1.8 KM OF DRILLED STRIKE IS JUST SCRATCHING THE SURFACE

DRILLING TO DATE HAS COVERED ONLY A FRACTION OF THE TOTAL POTENTIAL



Only **50%** of the 4 km x 1 km high tenor gold-in-soil anomaly

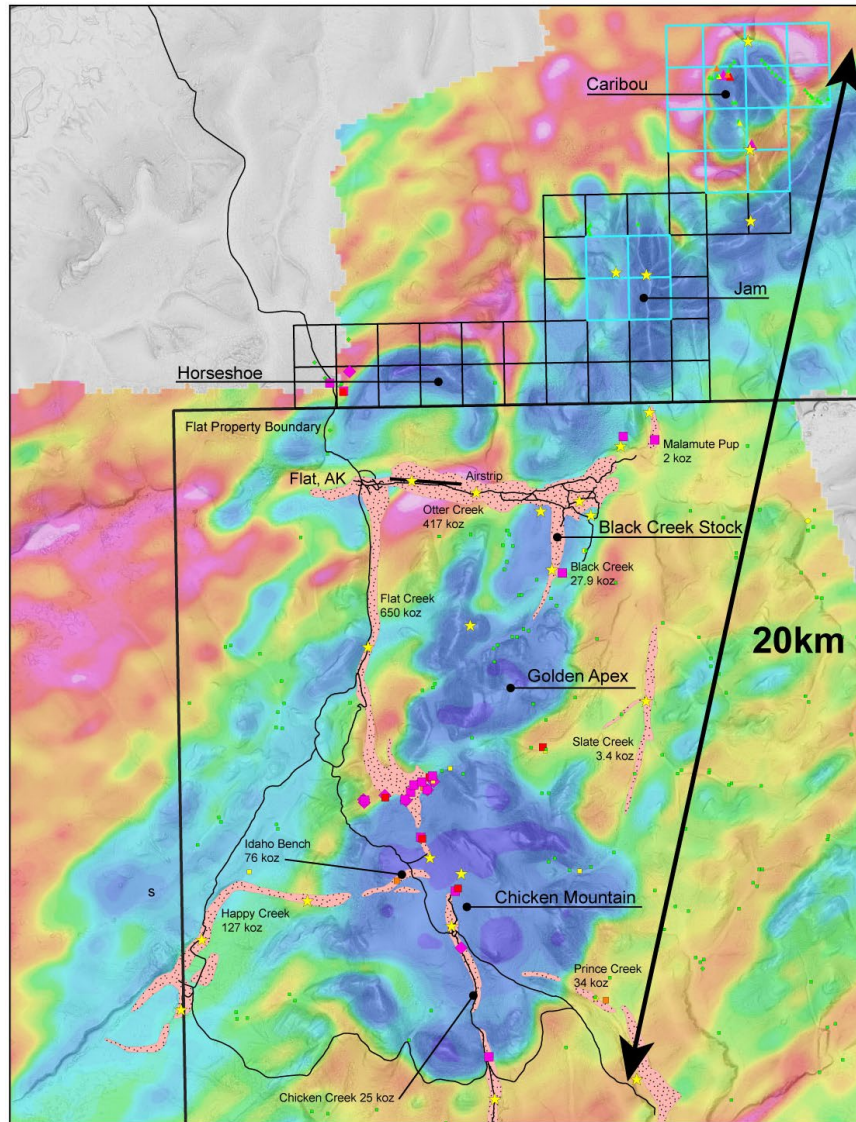
Only **33%** of the 6.0 km x 5.6 km Chicken Mountain geophysical anomaly

Only **17%** of the 20 km long complex of six potential and confirmed intrusions

1) Placer production figures from "Mineral Occurrence and Development Potential Report, Locatable and Salable Minerals, Bering Sea-Western Interior Resource Management Plan, BLM-Alaska Technical Report 60", prepared by the U.S. Department of the Interior, Bureau of Land Management, November 2010

VALUE ADD NEXT STEPS

2024 GOALS: IDENTIFY AND DRILL TEST "SWEET SPOTS/CUPOLAS" AT EACH INTRUSION TARGET



- ▶ Ongoing compilation, interpretation and examination of the complete 2023 drill data set
- ▶ Pathfinder element analysis (soil + drill hole data) across the property to uncover geochemical zonation patterns related to RIRGS targets;
- ▶ 3D magnetic inversion to aid in identifying the presence and locations of non-exposed intrusion cupolas
- ▶ Advance the property-wide structural framework utilizing 2023 oriented drill core data from Chicken Mountain and recently flown high resolution 2023 LiDAR data
- ▶ Unsampled historical 2003 drill core uncovered at Chicken Mountain & Gold Apex
 - ▶ Historical diamond drill core only partially sampled even though grades up to 20 g/t Au were reported
 - ▶ Drill core cutting and assaying of 2003 historic diamond drill core from
 - ▶ Tectonic will sample and assay a total 744 metres in 4 drill holes
- ▶ Ongoing metallurgical test work, including column heap leach tests to de-risk and explore heap leaching as a viable recovery method for gold mineralization
- ▶ All of the above will feed into generating drill targets at each intrusion target



TECTONIC
METALS INC.

THANK YOU!